

# PSMB2 Rabbit pAb

Catalog No.: A13630

## Basic Information

**Observed MW**

23kDa

**Calculated MW**

23kDa

**Category**

Primary antibody

**Applications**

ELISA, WB, IHC-P, IF/ICC, IP

**Cross-Reactivity**

Human, Rat

## Background

The proteasome is a multicatalytic proteinase complex with a highly ordered ring-shaped 20S core structure. The core structure is composed of 4 rings of 28 non-identical subunits; 2 rings are composed of 7 alpha subunits and 2 rings are composed of 7 beta subunits. Proteasomes are distributed throughout eukaryotic cells at a high concentration and cleave peptides in an ATP/ubiquitin-dependent process in a non-lysosomal pathway. An essential function of a modified proteasome, the immunoproteasome, is the processing of class I MHC peptides. This gene encodes a member of the proteasome B-type family, also known as the T1B family, that is a 20S core beta subunit. Multiple alternatively spliced transcript variants encoding distinct isoforms have been found for this gene.

## Recommended Dilutions

<b>WB</b>	1:500 - 1:2000
<b>IHC-P</b>	1:50 - 1:200
<b>IF/ICC</b>	1:50 - 1:200
<b>IP</b>	0.5µg-4µg antibody for 200µg-400µg extracts of whole cells

## Immunogen Information

<b>Gene ID</b>	<b>Swiss Prot</b>
5690	P49721

**Immunogen**

Recombinant fusion protein containing a sequence corresponding to amino acids 1-201 of human PSMB2 (NP\_002785.1).

**Synonyms**

HC7-I; PSMB2

## Contact

 | [www.abclonal.com](http://www.abclonal.com)

## Product Information

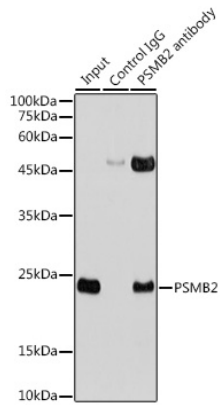
<b>Source</b>	<b>Isotype</b>	<b>Purification</b>
Rabbit	IgG	Affinity purification

**Storage**

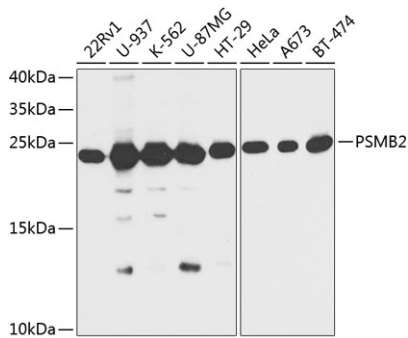
Store at -20°C. Avoid freeze / thaw cycles.

Buffer: PBS with 0.02% sodium azide, 50% glycerol, pH7.3.

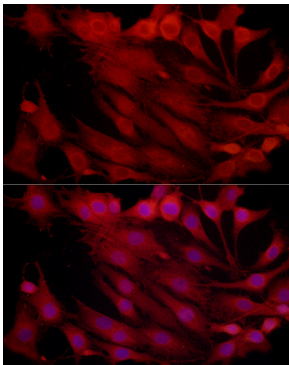
## Validation Data



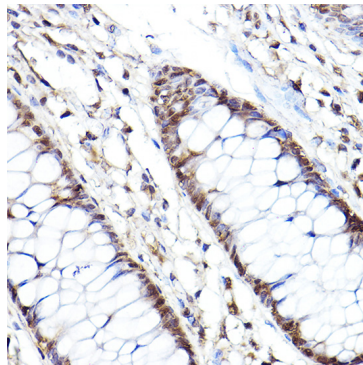
Immunoprecipitation analysis of 300 µg extracts of HeLa cells using 3 µg PSMB2 antibody (A13630). Western blot was performed from the immunoprecipitate using PSMB2 antibody (A13630) at a dilution of 1:1000.



Western blot analysis of various lysates using PSMB2 Rabbit pAb (A13630) at 1:1000 dilution. Secondary antibody: HRP Goat Anti-Rabbit IgG (H+L) (AS014) at 1:10000 dilution. Lysates/proteins: 25µg per lane. Blocking buffer: 3% nonfat dry milk in TBST. Detection: ECL Basic Kit (RM00020). Exposure time: 15s.



Immunofluorescence analysis of C6 cells using PSMB2 Rabbit pAb (A13630) at dilution of 1:100 (40x lens). Secondary antibody: Cy3 Goat Anti-Rabbit IgG (H+L) (AS007) at 1:500 dilution. Blue: DAPI for nuclear staining.



Immunohistochemistry analysis of PSMB2 in paraffin-embedded human colon using PSMB2 Rabbit pAb (A13630) at dilution of 1:100 (40x lens). Perform high pressure antigen retrieval with 10 mM citrate buffer pH 6.0 before commencing with IHC staining protocol.