

SPDYA Rabbit pAb

Catalog No.: A13607

Basic Information

Observed MW

50kDa

Calculated MW

36kDa

Category

Primary antibody

Applications

ELISA, WB

Cross-Reactivity

Human

Background

Enables protein kinase activator activity and protein kinase binding activity. Involved in several processes, including G1/S transition of mitotic cell cycle; positive regulation of cell population proliferation; and positive regulation of protein kinase activity. Located in nucleoplasm.

Recommended Dilutions

WB 1:500 - 1:2000

Immunogen Information

Gene ID

245711

Swiss Prot

Q5MJ70

Immunogen

Recombinant fusion protein containing a sequence corresponding to amino acids 1-313 of human SPDYA (NP_877433.2).

Synonyms

SPY1; SPDY1; RINGO3; RINGOA; SPDYA

Contact

 | www.abclonal.com

Product Information

Source

Rabbit

Isotype

IgG

Purification

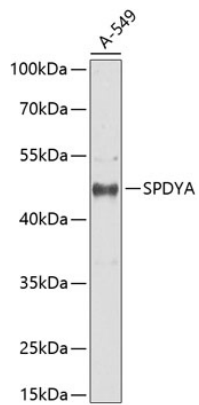
Affinity purification

Storage

Store at -20°C. Avoid freeze / thaw cycles.

Buffer: PBS with 0.02% sodium azide, 50% glycerol, pH7.3.

Validation Data



Western blot analysis of extracts of A549 cells, using SPDYA antibody (A13607) at 1:1000 dilution.
Secondary antibody: HRP Goat Anti-Rabbit IgG (H+L) (A5014) at 1:10000 dilution.
Lysates/proteins: 25µg per lane.
Blocking buffer: 3% nonfat dry milk in TBST.
Detection: ECL Enhanced Kit (RM00021).
Exposure time: 10s.