

# TRIF/TICAM1 Rabbit pAb

Catalog No.: A13605

## Basic Information

### Observed MW

70kDa

### Calculated MW

76kDa

### Category

Primary antibody

### Applications

ELISA, WB

### Cross-Reactivity

Human, Mouse, Rat

## Background

This gene encodes an adaptor protein containing a Toll/interleukin-1 receptor (TIR) homology domain, which is an intracellular signaling domain that mediates protein-protein interactions between the Toll-like receptors (TLRs) and signal-transduction components. This protein is involved in native immunity against invading pathogens. It specifically interacts with toll-like receptor 3, but not with other TLRs, and this association mediates dsRNA induction of interferon-beta through activation of nuclear factor kappa-B, during an antiviral immune response. Mutations in this gene are associated with encephalopathy, acute, infection-induced.

## Recommended Dilutions

WB 1:500 - 1:2000

## Immunogen Information

### Gene ID

148022

### Swiss Prot

Q8IUC6

### Immunogen

Recombinant fusion protein containing a sequence corresponding to amino acids 20-200 of human TRIF/TICAM1 (NP\_891549.1).

### Synonyms

TRIF; IIAE6; MyD88-3; PRVTIRB; TICAM-1; TRIF/TICAM1

## Contact

 | [www.abclonal.com](http://www.abclonal.com)

## Product Information

### Source

Rabbit

### Isotype

IgG

### Purification

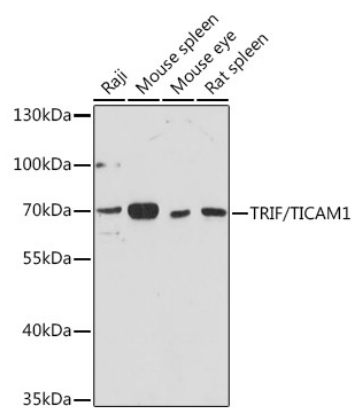
Affinity purification

### Storage

Store at -20°C. Avoid freeze / thaw cycles.

Buffer: PBS with 0.02% sodium azide, 50% glycerol, pH7.3.

# Validation Data



Western blot analysis of extracts of various cell lines, using TRIF/TICAM1 Rabbit pAb (A13605) at 1:1000 dilution.  
Secondary antibody: HRP Goat Anti-Rabbit IgG (H+L) (A5014) at 1:10000 dilution.  
Lysates/proteins: 25µg per lane.  
Blocking buffer: 3% nonfat dry milk in TBST.  
Detection: ECL Basic Kit (RM00020).  
Exposure time: 90s.