

# NUTF2 Rabbit pAb

Catalog No.: A13576 **1 Publications**

## Basic Information

### Observed MW

Refer to figures

### Calculated MW

14kDa

### Category

Primary antibody

### Applications

ELISA, WB, IF/ICC

### Cross-Reactivity

Human, Rat

## Background

This gene encodes a cytosolic factor that facilitates protein transport into the nucleus. The encoded protein is required for nuclear import of the small Ras-like GTPase, Ran which is involved in numerous cellular processes. This protein also interacts with the nuclear pore complex glycoprotein p62.

## Recommended Dilutions

<b>WB</b>	1:500 - 1:2000
<b>IF/ICC</b>	1:50 - 1:200

## Immunogen Information

<b>Gene ID</b>	<b>Swiss Prot</b>
10204	P61970


### Immunogen

Recombinant fusion protein containing a sequence corresponding to amino acids 1-127 of human NUTF2 (NP\_005787.1).

### Synonyms

NTF2; PP15; NTF-2; NUTF2

## Contact

 | [www.abclonal.com](http://www.abclonal.com)

## Product Information

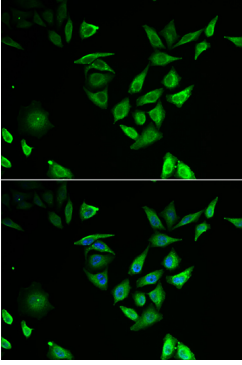
<b>Source</b>	<b>Isotype</b>	<b>Purification</b>
Rabbit	IgG	Affinity purification

### Storage

Store at -20°C. Avoid freeze / thaw cycles.  
Buffer: PBS with 0.02% sodium azide, 50% glycerol, pH7.3.

## Validation Data

---



Immunofluorescence analysis of U2OS cells using NUTF2 antibody (A13576). Blue: DAPI for nuclear staining.