

TCAP Rabbit pAb

Catalog No.: A13566

Basic Information

Observed MW

19kDa

Calculated MW

19kDa

Category

Primary antibody

Applications

ELISA, WB

Cross-Reactivity

Human, Mouse, Rat

Background

Sarcomere assembly is regulated by the muscle protein titin. Titin is a giant elastic protein with kinase activity that extends half the length of a sarcomere. It serves as a scaffold to which myofibrils and other muscle related proteins are attached. This gene encodes a protein found in striated and cardiac muscle that binds to the titin Z1-Z2 domains and is a substrate of titin kinase, interactions thought to be critical to sarcomere assembly. Mutations in this gene are associated with limb-girdle muscular dystrophy type 2G.

Recommended Dilutions

WB 1:500 - 1:1000

Immunogen Information

Gene ID

8557

Swiss Prot

O15273

Immunogen

Recombinant fusion protein containing a sequence corresponding to amino acids 1-167 of human TCAP (NP_003664.1).

Synonyms

TELE; CMD1N; CMH25; T-cap; LGMD2G; LGMDR7; telethonin; TCAP

Contact

 | www.abclonal.com

Product Information

Source

Rabbit

Isotype

IgG

Purification

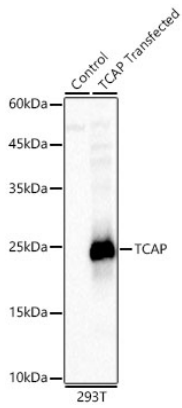
Affinity purification

Storage

Store at -20°C. Avoid freeze / thaw cycles.

Buffer: PBS with 0.02% sodium azide, 50% glycerol, pH 7.3.

Validation Data



Western blot analysis of lysates from wild type (WT) and 293T cells transfected with TCAP using TCAP Rabbit pAb(A13566) at 1:2000 dilution.
Secondary antibody: HRP Goat Anti-Rabbit IgG (H+L)(A5014) at 1:10000 dilution.
Lysates/proteins: 20 µg per lane.
Blocking buffer: 3% nonfat dry milk in TBST.
Detection: ECL Basic Kit (RM00020).
Exposure time: 1s.