

A13542

Leader in Biomolecular Solutions for Life Science



RPL11 Rabbit pAb

Catalog No.: A13542

Basic Information

Observed MW

Calculated MW
20kDa

Category
Polyclonal Antibody

Applications
IF/ICC,ELISA

Cross-Reactivity
Human

Background

Ribosomes, the organelles that catalyze protein synthesis, consist of a small 40S subunit and a large 60S subunit. Together these subunits are composed of 4 RNA species and approximately 80 structurally distinct proteins. This gene encodes a ribosomal protein that is a component of the 60S subunit. The protein belongs to the L5P family of ribosomal proteins. It is located in the cytoplasm. The protein probably associates with the 5S rRNA. Alternatively spliced transcript variants encoding different isoforms have been found for this gene. As is typical for genes encoding ribosomal proteins, there are multiple processed pseudogenes of this gene dispersed through the genome.

Recommended Dilutions

IF/ICC 1:50 - 1:200

Immunogen Information

Gene ID 6135	Swiss Prot P62913
------------------------	-----------------------------

Immunogen
Recombinant fusion protein containing a sequence corresponding to amino acids 1-177 of human RPL11 (NP_001186731.1).

Synonyms
L11; uL5; DBA7; GIG34; RPL11

Contact

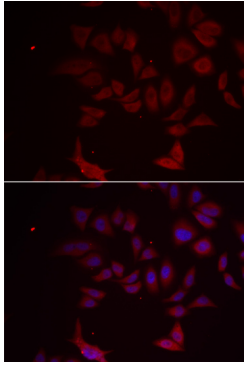
 | www.abclonal.com

Product Information

Source Rabbit	Isotype IgG	Purification Affinity purification
-------------------------	-----------------------	--

Storage
Store at -20°C. Avoid freeze / thaw cycles.
Buffer: PBS with 0.02% sodium azide,50% glycerol,pH7.3.

Validation Data



Immunofluorescence analysis of MCF-7 cells using RPL11 antibody (A13542). Blue: DAPI for nuclear staining.