

A13481

Leader in Biomolecular Solutions for Life Science



CSNK2A2 Rabbit pAb

Catalog No.: A13481

Basic Information

Observed MW

38kDa

Calculated MW

41kDa

Category

Polyclonal Antibody

Applications

WB,IHC-P,IF/ICC,ELISA

Cross-Reactivity

Human,Mouse,Rat

Background

This gene encodes the alpha', or alpha 2, catalytic subunit of the protein kinase enzyme, casein kinase 2 (CK2). Casein kinase 2 is a serine/threonine protein kinase that phosphorylates acidic proteins such as casein. It is involved in various cellular processes, including cell cycle control, apoptosis, and circadian rhythms. This heterotetrameric kinase includes two catalytic subunits, either alpha or alpha', and two regulatory beta subunits. The closely related gene paralog encoding the alpha, or alpha 1 subunit (CSNK2A1, Gene ID: 1457) is found on chromosome 20. An intronic variant in this gene (alpha 2) may be associated with leukocyte telomere length in a South Asian population. A related transcribed pseudogene is found on chromosome 11.

Recommended Dilutions

WB 1:500 - 1:2000

IHC-P 1:50 - 1:100

IF/ICC 1:50 - 1:100

Immunogen Information

Gene ID

1459

Swiss Prot

P19784

Immunogen

Recombinant fusion protein containing a sequence corresponding to amino acids 1-350 of human CSNK2A2 (NP_001887.1).

Synonyms

CK2A2; CSNK2A1; CK2alpha'; CSNK2A2

Contact



www.abclonal.com

Product Information

Source

Rabbit

Isotype

IgG

Purification

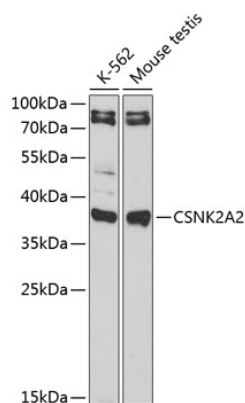
Affinity purification

Storage

Store at -20°C. Avoid freeze / thaw cycles.

Buffer: PBS with 0.02% sodium azide, 50% glycerol, pH7.3.

Validation Data

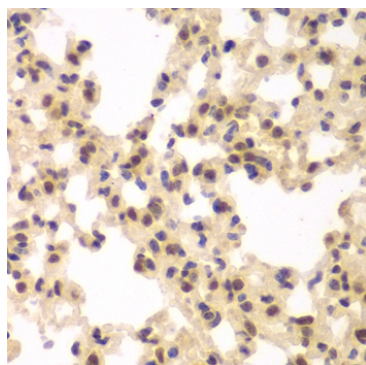


Western blot analysis of various lysates using CSNK2A2 Rabbit pAb (A13481) at 1:1000 dilution.

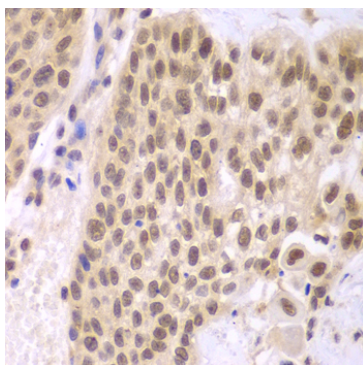
Secondary antibody: HRP Goat Anti-Rabbit IgG (H+L) (AS014) at 1:10000 dilution.

Lysates/proteins: 25µg per lane.

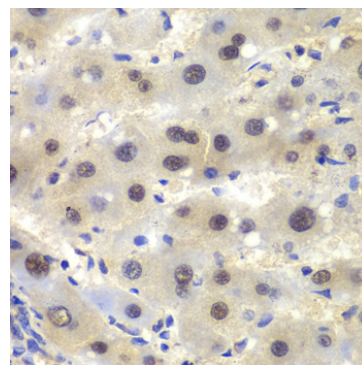
Blocking buffer: 3% nonfat dry milk in TBST.



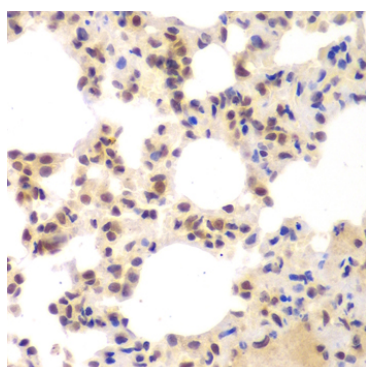
Immunohistochemistry analysis of paraffin-embedded rat lung using CSNK2A2 Rabbit pAb (A13481) at dilution of 1:100 (40x lens). Perform microwave antigen retrieval with 10 mM PBS buffer pH 7.2 before commencing with IHC staining protocol.



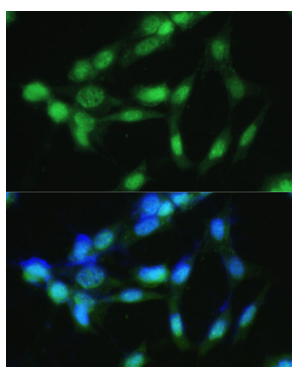
Immunohistochemistry analysis of paraffin-embedded human lung cancer using CSNK2A2 Rabbit pAb (A13481) at dilution of 1:100 (40x lens). Perform microwave antigen retrieval with 10 mM PBS buffer pH 7.2 before commencing with IHC staining protocol.



Immunohistochemistry analysis of paraffin-embedded human liver cancer using CSNK2A2 Rabbit pAb (A13481) at dilution of 1:100 (40x lens). Perform microwave antigen retrieval with 10 mM PBS buffer pH 7.2 before commencing with IHC staining protocol.



Immunohistochemistry analysis of paraffin-embedded mouse lung using CSNK2A2 Rabbit pAb (A13481) at dilution of 1:100 (40x lens). Perform microwave antigen retrieval with 10 mM PBS buffer pH 7.2 before commencing with IHC staining protocol.



Immunofluorescence analysis of NIH-3T3 cells using CSNK2A2 Rabbit pAb (A13481) at dilution of 1:100 (40x lens). Secondary antibody: Cy3 Goat Anti-Rabbit IgG (H+L) (AS007) at 1:500 dilution. Blue: DAPI for nuclear staining.