

# MLKL Rabbit pAb

Catalog No.: A13450

## Basic Information

### Observed MW

54kDa

### Calculated MW

53kDa/54kDa

### Category

Primary antibody

### Applications

ELISA, WB, IHC-P

### Cross-Reactivity

Human

## Background

This gene belongs to the protein kinase superfamily. The encoded protein contains a protein kinase-like domain; however, is thought to lack protein kinase activity. This protein plays a critical role in tumor necrosis factor (TNF)-induced necroptosis, a programmed cell death process, via interaction with receptor-interacting protein 3 (Rip3), which is a key signaling molecule in necroptosis pathway. Knockout of this gene in mice showed that it is essential for necroptosis. Alternatively spliced transcript variants have been found for this gene.

## Recommended Dilutions

**WB** 1:500 - 1:2000

**IHC-P** 1:50 - 1:200

## Immunogen Information

### Gene ID

74568

### Swiss Prot

### Immunogen

Recombinant fusion protein containing a sequence corresponding to amino acids 1-62 of mouse MLKL (Q9D2Y4).

### Synonyms

9130019I15Rik; MLKL

## Contact

 | [www.abclonal.com](http://www.abclonal.com)

## Product Information

### Source

Rabbit

### Isotype

IgG

### Purification

Affinity purification

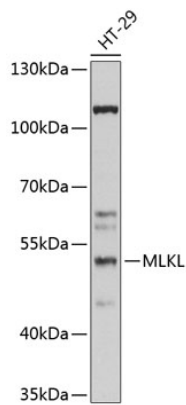
### Storage

Store at -20°C. Avoid freeze / thaw cycles.

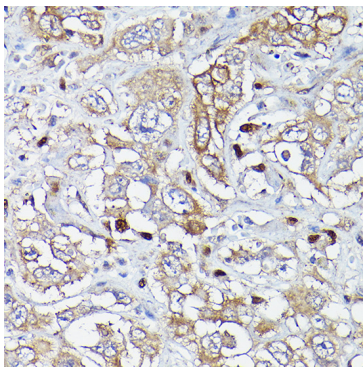
Buffer: PBS with 0.01% thimerosal, 50% glycerol, pH7.3.

## Validation Data

---



Western blot analysis of lysates from HT-29 cells, using MLKL Rabbit pAb (A13450) at 1:1000 dilution.  
Secondary antibody: HRP Goat Anti-Rabbit IgG (H+L) (AS014) at 1:10000 dilution.  
Lysates/proteins: 25µg per lane.  
Blocking buffer: 3% nonfat dry milk in TBST.  
Detection: ECL Basic Kit (RM00020).  
Exposure time: 60s.



Immunohistochemistry analysis of MLKL in paraffin-embedded human liver cancer using MLKL Rabbit pAb (A13450) at dilution of 1:200 (40x lens). Perform high pressure antigen retrieval with 10 mM citrate buffer pH 6.0 before commencing with IHC staining protocol.