

[KO Validated] Cytochrome C Rabbit pAb

Catalog No.: A13430 **KO Validated** **16 Publications**

Basic Information

Catalog No.

A13430

Observed MW

11kDa

Calculated MW

11kDa

Category

Primary antibody

Applications

WB, IHC, IF

Cross-Reactivity

Human, Mouse, Rat

Recommended Dilutions

WB	1:500 - 1:2000
IHC	1:50 - 1:200
IF	1:50 - 1:200

Contact

 | www.abclonal.com

Background

This gene encodes a small heme protein that functions as a central component of the electron transport chain in mitochondria. The encoded protein associates with the inner membrane of the mitochondrion where it accepts electrons from cytochrome b and transfers them to the cytochrome oxidase complex. This protein is also involved in initiation of apoptosis. Mutations in this gene are associated with autosomal dominant nonsyndromic thrombocytopenia. Numerous processed pseudogenes of this gene are found throughout the human genome.

Immunogen Information

Gene ID	Swiss Prot
54205	P99999

Immunogen

Recombinant fusion protein containing a sequence corresponding to amino acids 1-105 of human Cytochrome C (NP_061820.1).

Synonyms

CYCS;CYC;HCS;THC4;cytochrome c

Product Information

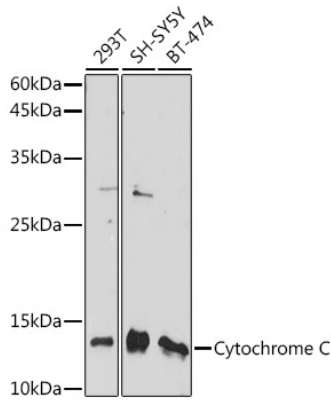
Source	Isotype	Purification
Rabbit	IgG	Affinity purification

Storage

Store at -20°C. Avoid freeze / thaw cycles.

Buffer: PBS with 0.02% sodium azide,50% glycerol,pH7.3.

Validation Data



Western blot analysis of extracts of various cell lines, using Cytochrome C Rabbit pAb (A13430) at 1:1000 dilution.

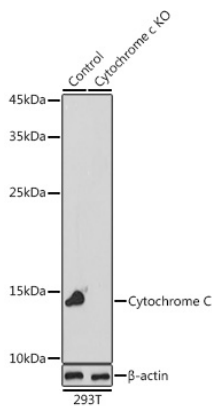
Secondary antibody: HRP Goat Anti-Rabbit IgG (H+L) (AS014) at 1:10000 dilution.

Lysates/proteins: 25ug per lane.

Blocking buffer: 3% nonfat dry milk in TBST.

Detection: ECL Basic Kit (RM00020).

Exposure time: 60s.



Western blot analysis of extracts from normal (control) and Cytochrome C knockout (KO) 293T cells, using Cytochrome C antibody (A13430) at 1:1000 dilution.

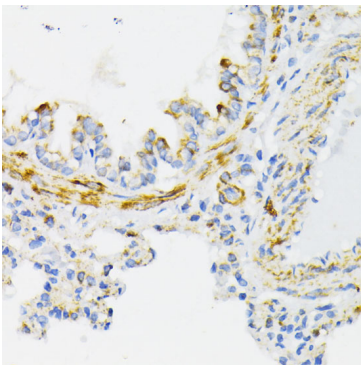
Secondary antibody: HRP Goat Anti-Rabbit IgG (H+L) (AS014) at 1:10000 dilution.

Lysates/proteins: 25ug per lane.

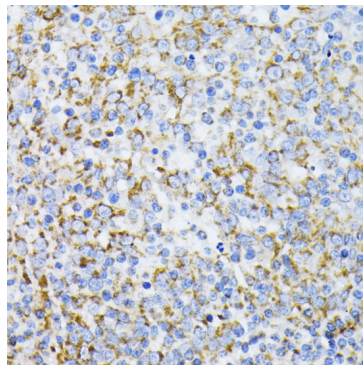
Blocking buffer: 3% nonfat dry milk in TBST.

Detection: ECL Basic Kit (RM00020).

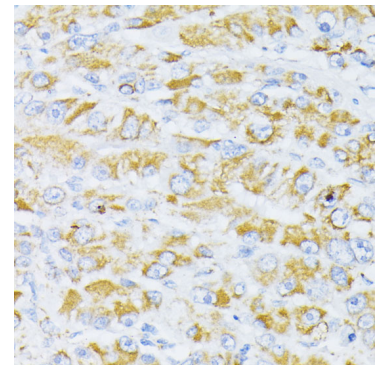
Exposure time: 90s.



Immunohistochemistry of paraffin-embedded rat lung using Cytochrome C antibody (A13430) at dilution of 1:100 (40x lens).

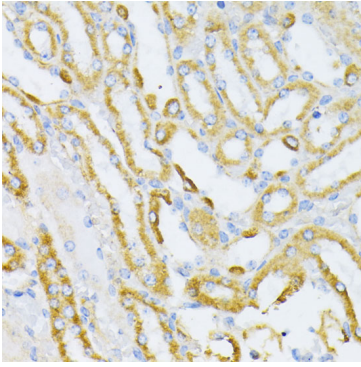


Immunohistochemistry of paraffin-embedded human tonsil using Cytochrome C antibody (A13430) at dilution of 1:100 (40x lens).

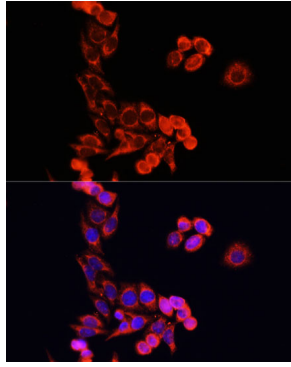


Immunohistochemistry of paraffin-embedded human liver cancer using Cytochrome C antibody (A13430) at dilution of 1:100 (40x lens).

Validation Data



Immunohistochemistry of paraffin-embedded mouse kidney using Cytochrome C antibody (A13430) at dilution of 1:100 (40x lens).



Immunofluorescence analysis of HeLa cells using Cytochrome C antibody (A13430) at dilution of 1:100. Blue: DAPI for nuclear staining.