

# UBIAD1 Rabbit pAb

Catalog No.: A13421

## Basic Information

---

### Observed MW

37kDa

### Calculated MW

37kDa

### Category

Primary antibody

### Applications

ELISA, WB

### Cross-Reactivity

Human, Mouse

## Background

---

This gene encodes a protein thought to be involved in cholesterol and phospholipid metabolism. Mutations in this gene are associated with Schnyder crystalline corneal dystrophy.

## Recommended Dilutions

---

WB 1:500 - 1:2000

## Immunogen Information

---

### Gene ID

29914

### Swiss Prot

Q9Y5Z9

### Immunogen

A synthetic peptide corresponding to a sequence within amino acids 250-338 of human UBIAD1 (NP\_037451.1).

### Synonyms

SCCD; TERE1; UBIAD1

## Contact

---

 | [www.abclonal.com](http://www.abclonal.com)

## Product Information

---

### Source

Rabbit

### Isotype

IgG

### Purification

Affinity purification

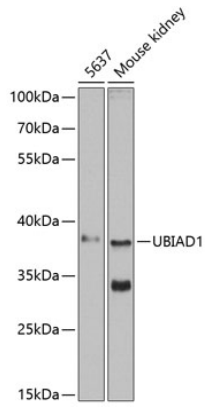
### Storage

Store at -20°C. Avoid freeze / thaw cycles.

Buffer: PBS with 0.02% sodium azide, 50% glycerol, pH7.3.

## Validation Data

---



Western blot analysis of extracts of various cell lines, using UBIAD1 antibody (A13421) at 1:500 dilution.

Secondary antibody: HRP Goat Anti-Rabbit IgG (H+L) (AS014) at 1:10000 dilution.

Lysates/proteins: 25µg per lane.

Blocking buffer: 3% nonfat dry milk in TBST.

Detection: ECL Enhanced Kit (RM00021).

Exposure time: 60s.