

# UPF2 Rabbit pAb

Catalog No.: A13411 **1 Publications**

## Basic Information

### Observed MW

170kDa

### Calculated MW

148kDa

### Category

Primary antibody

### Applications

ELISA, WB, IHC-P, IP

### Cross-Reactivity

Human, Rat

## Background

This gene encodes a protein that is part of a post-splicing multiprotein complex involved in both mRNA nuclear export and mRNA surveillance. mRNA surveillance detects exported mRNAs with truncated open reading frames and initiates nonsense-mediated mRNA decay (NMD). When translation ends upstream from the last exon-exon junction, this triggers NMD to degrade mRNAs containing premature stop codons. This protein is located in the perinuclear area. It interacts with translation release factors and the proteins that are functional homologs of yeast Upf1p and Upf3p. Two splice variants have been found for this gene; both variants encode the same protein.

## Recommended Dilutions

**WB** 1:500 - 1:2000**IHC-P** 1:50 - 1:200**IP** 0.5µg-4µg antibody for  
200µg-400µg extracts of  
whole cells

## Immunogen Information

### Gene ID

26019

### Swiss Prot

Q9HAU5

### Immunogen

Recombinant fusion protein containing a sequence corresponding to amino acids 1153-1272 of human UPF2 (NP\_542166.1).

### Synonyms

HUPF2; RENT2; smg-3; UPF2

## Contact

 | [www.abclonal.com](http://www.abclonal.com)

## Product Information

### Source

Rabbit

### Isotype

IgG

### Purification

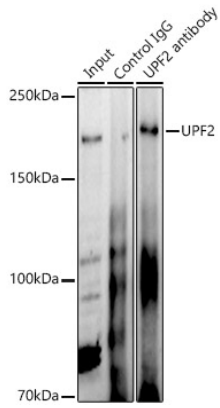
Affinity purification

### Storage

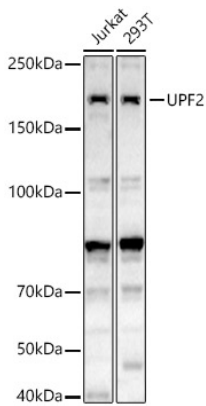
Store at -20°C. Avoid freeze / thaw cycles.

Buffer: PBS with 0.02% sodium azide, 50% glycerol, pH7.3.

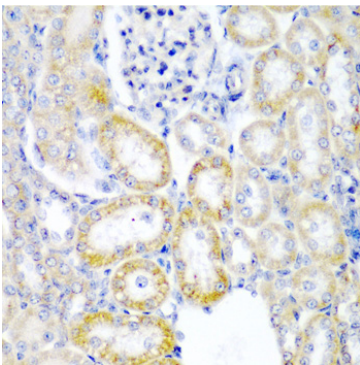
## Validation Data



Immunoprecipitation analysis of 300ug extracts of 293T cells using 3ug UPF2 Rabbit pAb (A13411 1:200). Western blot was performed from the immunoprecipitate using UPF2 Rabbit pAb (A7091) at a dilution of 1:1000.



Western blot analysis of various lysates, using UPF2 Rabbit pAb (A13411) at 1:2000 dilution. Secondary antibody: HRP Goat Anti-Rabbit IgG (H+L) (AS014) at 1:10000 dilution. Lysates/proteins: 25ug per lane. Blocking buffer: 3% nonfat dry milk in TBST. Detection: ECL Basic Kit (RM00020). Exposure time: 180s.



Immunohistochemistry analysis of UPF2 in paraffin-embedded rat kidney using UPF2 Rabbit pAb (A13411) at dilution of 1:200 (40x lens). Perform microwave antigen retrieval with 10 mM PBS buffer pH 7.2 before commencing with IHC staining protocol.