

# TEAD1 Rabbit pAb

Catalog No.: A13366 **3 Publications**

## Basic Information

### Observed MW

50kDa

### Calculated MW

48kDa

### Category

Primary antibody

### Applications

ELISA, WB, IHC-P, IF/ICC, ChIP

### Cross-Reactivity

Human, Mouse, Rat

## Background

This gene encodes a ubiquitous transcriptional enhancer factor that is a member of the TEA/ATTS domain family. This protein directs the transactivation of a wide variety of genes and, in placental cells, also acts as a transcriptional repressor. Mutations in this gene cause Sveinsson's chorioretinal atrophy. Additional transcript variants have been described but their full-length natures have not been experimentally verified.

## Recommended Dilutions

<b>WB</b>	1:500 - 1:1000
<b>IHC-P</b>	1:50 - 1:200
<b>IF/ICC</b>	1:50 - 1:200
<b>ChIP</b>	5µg antibody for 10µg-15µg of Chromatin

## Immunogen Information

<b>Gene ID</b>	<b>Swiss Prot</b>
7003	P28347

### Immunogen

A synthetic peptide corresponding to a sequence within amino acids 200-300 of human TEAD1 (NP\_068780.2).

### Synonyms

AA; REF1; TCF13; TEF-1; NTEF-1; TCF-13; TEAD-1; TEAD1

## Contact

 | [www.abclonal.com](http://www.abclonal.com)

## Product Information

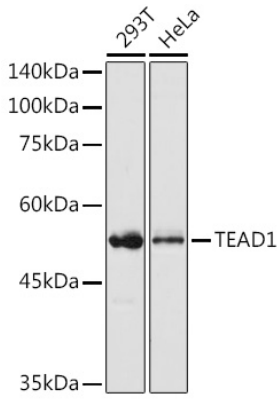
<b>Source</b>	<b>Isotype</b>	<b>Purification</b>
Rabbit	IgG	Affinity purification

### Storage

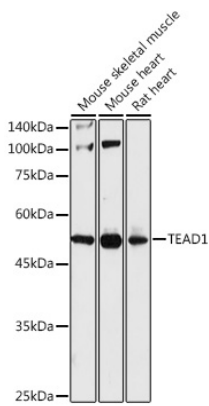
Store at -20°C. Avoid freeze / thaw cycles.

Buffer: PBS with 0.01% thimerosal, 50% glycerol, pH7.3.

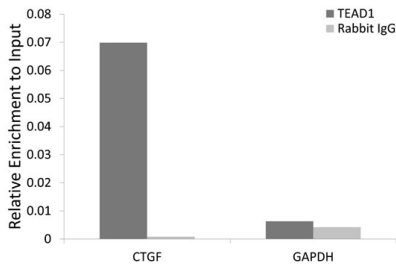
## Validation Data



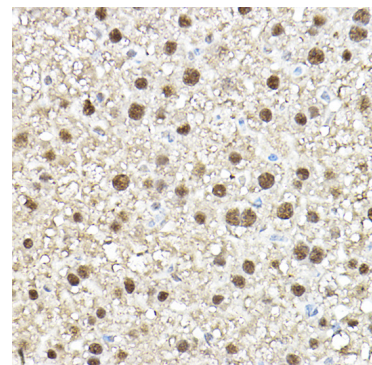
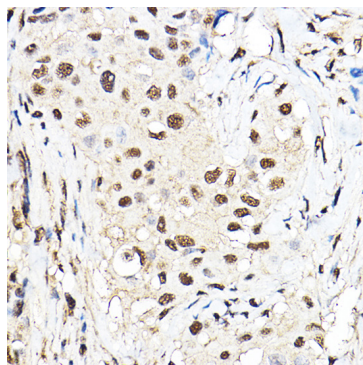
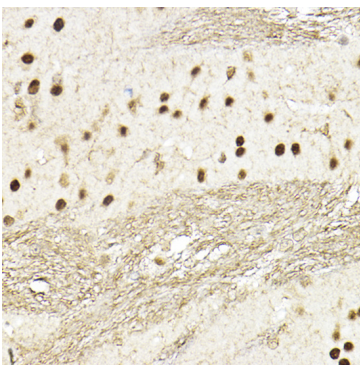
Western blot analysis of various lysates using TEAD1 Rabbit pAb (A13366) at 1:1000 dilution.  
 Secondary antibody: HRP Goat Anti-Rabbit IgG (H+L) (AS014) at 1:10000 dilution.  
 Lysates/proteins: 25µg per lane.  
 Blocking buffer: 3% nonfat dry milk in TBST.  
 Detection: ECL Basic Kit (RM00020).  
 Exposure time: 1s.



Western blot analysis of various lysates using TEAD1 Rabbit pAb (A13366) at 1:1000 dilution.  
 Secondary antibody: HRP Goat Anti-Rabbit IgG (H+L) (AS014) at 1:10000 dilution.  
 Lysates/proteins: 25µg per lane.  
 Blocking buffer: 3% nonfat dry milk in TBST.  
 Detection: ECL Basic Kit (RM00020).  
 Exposure time: 180s.



Chromatin immunoprecipitation analysis of extracts of HeLa cell line, using TEAD1 rabbit polyclonal antibody (A13366) and rabbit IgG. The amount of immunoprecipitated DNA was checked by quantitative PCR. Histogram was constructed by the ratios of the immunoprecipitated DNA to the input.



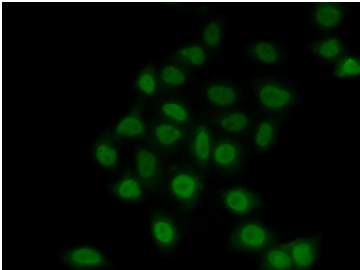
## Validation Data

---

Immunohistochemistry analysis of TEAD1 in paraffin-embedded rat brain using TEAD1 Rabbit pAb (A13366) at dilution of 1:100 (40x lens). Perform high pressure antigen retrieval with 10 mM citrate buffer pH 6.0 before commencing with IHC staining protocol.

Immunohistochemistry analysis of TEAD1 in paraffin-embedded human breast cancer using TEAD1 Rabbit pAb (A13366) at dilution of 1:100 (40x lens). Perform high pressure antigen retrieval with 10 mM citrate buffer pH 6.0 before commencing with IHC staining protocol.

Immunohistochemistry analysis of TEAD1 in paraffin-embedded mouse liver using TEAD1 Rabbit pAb (A13366) at dilution of 1:100 (40x lens). Perform high pressure antigen retrieval with 10 mM citrate buffer pH 6.0 before commencing with IHC staining protocol.



Immunofluorescence analysis of MCF7 cells using TEAD1 Rabbit pAb (A13366).