

A13310

Leader in Biomolecular Solutions for Life Science



## [KO Validated] HADHA Rabbit pAb

Catalog No.: A13310 **KO Validated** **2 Publications**

### Basic Information

#### Observed MW

78kDa

#### Calculated MW

83kDa

#### Category

Mouse Monoclonal Antibody

#### Applications

WB, IHC-P, IF/ICC, IP, ELISA

#### Cross-Reactivity

Human, Mouse

### Background

This gene encodes the alpha subunit of the mitochondrial trifunctional protein, which catalyzes the last three steps of mitochondrial beta-oxidation of long chain fatty acids. The mitochondrial membrane-bound heterocomplex is composed of four alpha and four beta subunits, with the alpha subunit catalyzing the 3-hydroxyacyl-CoA dehydrogenase and enoyl-CoA hydratase activities. Mutations in this gene result in trifunctional protein deficiency or LCHAD deficiency. The genes of the alpha and beta subunits of the mitochondrial trifunctional protein are located adjacent to each other in the human genome in a head-to-head orientation.

### Recommended Dilutions

<b>WB</b>	1:2000 - 1:6000
<b>IHC-P</b>	1:50 - 1:200
<b>IF/ICC</b>	1:50 - 1:200
<b>IP</b>	0.5µg-4µg antibody for 200µg-400µg extracts of whole cells

### Immunogen Information

<b>Gene ID</b>	<b>Swiss Prot</b>
3030	P40939

#### Immunogen

Recombinant fusion protein containing a sequence corresponding to amino acids 484-763 of human HADHA (NP\_000173.2).

#### Synonyms

GBP; ECHA; HADH; LCEH; MTPA; LCHAD; TP-ALPHA; HA

### Contact



[www.abclonal.com](http://www.abclonal.com)

### Product Information

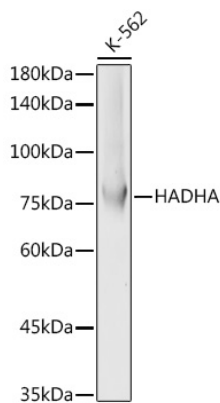
<b>Source</b>	<b>Isotype</b>	<b>Purification</b>
Rabbit	IgG	Affinity purification

#### Storage

Store at -20°C. Avoid freeze / thaw cycles.

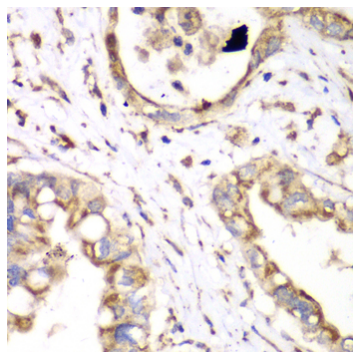
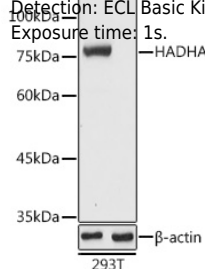
Buffer: PBS with 0.02% sodium azide, 50% glycerol, pH 7.3.

## Validation Data

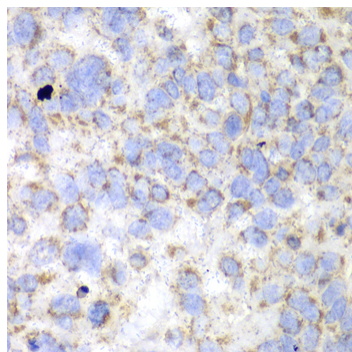


Western blot analysis of lysates from K-562 cells, using [KO Validated] HADHA Rabbit pAb (A13310) at 1:5000 dilution.  
 Secondary antibody: HRP Goat Anti-Rabbit IgG (H+L) (AS014) at 1:10000 dilution.  
 Lysates/proteins: 25µg per lane.  
 Blocking buffer: 3% nonfat dry milk in TBST.  
 Detection: ECL Basic Kit (RM00020).  
 Exposure time: 1s.

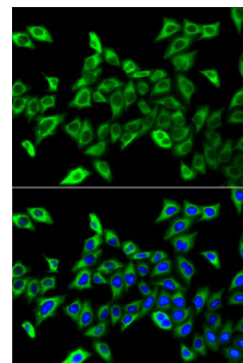
Western blot analysis of lysates from wild type (WT) and HADHA knockout (KO) 293T cells, using [KO Validated] HADHA Rabbit pAb (A13310) at 1:5000 dilution.  
 Secondary antibody: HRP Goat Anti-Rabbit IgG (H+L) (AS014) at 1:10000 dilution.  
 Lysates/proteins: 25µg per lane.  
 Blocking buffer: 3% nonfat dry milk in TBST.  
 Detection: ECL Basic Kit (RM00020).  
 Exposure time: 1s.



Immunohistochemistry analysis of HADHA in paraffin-embedded human liver cancer using [KO Validated] HADHA Rabbit pAb (A13310) at dilution of 1:100 (40x lens). Perform microwave antigen retrieval with 10 mM PBS buffer pH 7.2 before commencing with IHC staining protocol.



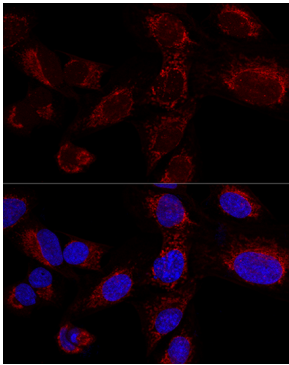
Immunohistochemistry analysis of HADHA in paraffin-embedded human esophageal cancer using [KO Validated] HADHA Rabbit pAb (A13310) at dilution of 1:100 (40x lens). Perform microwave antigen retrieval with 10 mM PBS buffer pH 7.2 before commencing with IHC staining protocol.



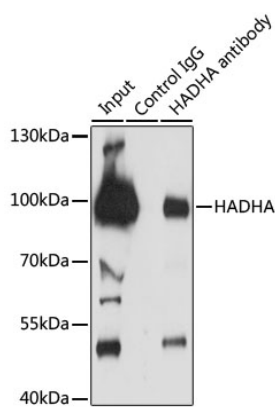
Immunofluorescence analysis of A-549 cells using [KO Validated] HADHA Rabbit pAb (A13310). Secondary antibody: Cy3 Goat Anti-Rabbit IgG (H+L) (AS007) at 1:500 dilution. Blue: DAPI for nuclear staining.

## Validation Data

---



Confocal immunofluorescence analysis of U2OS cells using [KO Validated] HADHA Rabbit pAb (A13310) at dilution of 1:100. Blue: DAPI for nuclear staining.



Immunoprecipitation analysis of 200  $\mu$ g extracts of HeLa cells using 3  $\mu$ g HADHA antibody (A13310). Western blot was performed from the immunoprecipitate using HADHA antibody (A13310) at a dilution of 1:1000.