

# HBB Rabbit pAb

Catalog No.: A1331 **1 Publications**

## Basic Information

---

**Observed MW**

16kDa

**Calculated MW**

16kDa

**Category**

Primary antibody

**Applications**

ELISA, WB

**Cross-Reactivity**

Human, Rat

## Background

---

The alpha (HBA) and beta (HBB) loci determine the structure of the 2 types of polypeptide chains in adult hemoglobin, Hb A. The normal adult hemoglobin tetramer consists of two alpha chains and two beta chains. Mutant beta globin causes sickle cell anemia. Absence of beta chain causes beta-zero-thalassemia. Reduced amounts of detectable beta globin causes beta-plus-thalassemia. The order of the genes in the beta-globin cluster is 5'-epsilon -- gamma-G -- gamma-A -- delta -- beta--3'.

## Recommended Dilutions

---

WB 1:500 - 1:2000

## Immunogen Information

---

**Gene ID**

3043

**Swiss Prot**

P68871

**Immunogen**

A synthetic peptide corresponding to a sequence within amino acids 47-147 of human HBB (NP\_000509.1).

**Synonyms**

ECYT6; CD113t-C; beta-globin; HBB

## Contact

---

 | [www.abclonal.com](http://www.abclonal.com)

## Product Information

---

**Source**

Rabbit

**Isotype**

IgG

**Purification**

Affinity purification

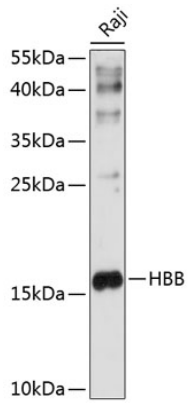
**Storage**

Store at -20°C. Avoid freeze / thaw cycles.

Buffer: PBS with 0.05% proclin300, 50% glycerol, pH7.3.

## Validation Data

---



Western blot analysis of extracts of Raji cells, using HBB antibody (A1331) at 1:1000 dilution.  
Secondary antibody: HRP Goat Anti-Rabbit IgG (H+L) (AS014) at 1:10000 dilution.  
Lysates/proteins: 25µg per lane.  
Blocking buffer: 3% nonfat dry milk in TBST.  
Detection: ECL Enhanced Kit (RM00021).  
Exposure time: 10s.