

ETS1 Rabbit pAb

Catalog No.: A13302 **2 Publications**

Basic Information

Observed MW

55kDa

Calculated MW

50kDa

Category

Primary antibody

Applications

ELISA, WB, IF/ICC, IP

Cross-Reactivity

Human, Mouse

Background

This gene encodes a member of the ETS family of transcription factors, which are defined by the presence of a conserved ETS DNA-binding domain that recognizes the core consensus DNA sequence GGAA/T in target genes. These proteins function either as transcriptional activators or repressors of numerous genes, and are involved in stem cell development, cell senescence and death, and tumorigenesis. Alternatively spliced transcript variants encoding different isoforms have been described for this gene.

Recommended Dilutions

WB 1:500 - 1:2000**IF/ICC** 1:50 - 1:200**IP** 0.5µg-4µg antibody for
200µg-400µg extracts of
whole cells

Immunogen Information

Gene ID

2113

Swiss Prot

P14921

Immunogen

Recombinant fusion protein containing a sequence corresponding to amino acids 1-260 of human ETS1 (NP_005229.1).

Synonyms

p54; ETS-1; EWSR2; c-ets-1; ETS1

Contact

 | www.abclonal.com

Product Information

Source

Rabbit

Isotype

IgG

Purification

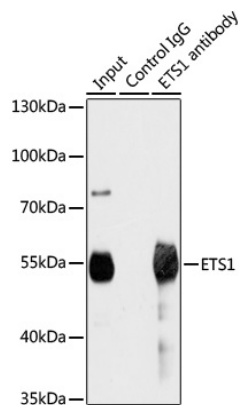
Affinity purification

Storage

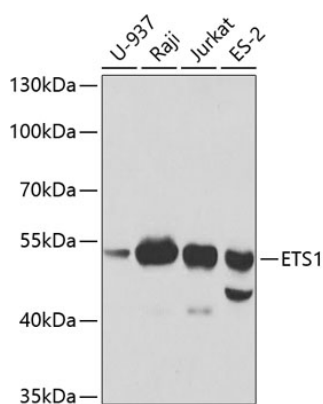
Store at -20°C. Avoid freeze / thaw cycles.

Buffer: PBS with 0.02% sodium azide, 50% glycerol, pH7.3.

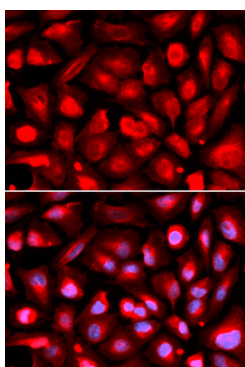
Validation Data



Immunoprecipitation analysis of 200 µg extracts of Jurkat cells using 1 µg ETS1 antibody (A13302). Western blot was performed from the immunoprecipitate using ETS1 antibody (A13302) at a dilution of 1:1000.



Western blot analysis of various lysates using ETS1 Rabbit pAb (A13302) at 1:1000 dilution. Secondary antibody: HRP Goat Anti-Rabbit IgG (H+L) (AS014) at 1:10000 dilution. Lysates/proteins: 25µg per lane. Blocking buffer: 3% nonfat dry milk in TBST.



Immunofluorescence analysis of U2OS cells using ETS1 Rabbit pAb (A13302). Secondary antibody: Cy3 Goat Anti-Rabbit IgG (H+L) (AS007) at 1:500 dilution. Blue: DAPI for nuclear staining.