

SKIV2L2 Rabbit pAb

Catalog No.: A13258

Basic Information

Observed MW

118kDa

Calculated MW

118kDa

Category

Primary antibody

Applications

ELISA, WB

Cross-Reactivity

Human, Mouse, Rat

Background

Enables ATP binding activity and RNA helicase activity. Involved in RNA catabolic process; cellular response to DNA damage stimulus; and maturation of 5.8S rRNA. Located in nucleoplasm. Part of TRAMP complex and catalytic step 2 spliceosome. Colocalizes with nuclear exosome (RNase complex). Biomarker of amyotrophic lateral sclerosis.

Recommended Dilutions

WB 1:500 - 1:2000

Immunogen Information

Gene ID

23517

Swiss Prot

P42285

Immunogen

Recombinant fusion protein containing a sequence corresponding to amino acids 1-300 of human SKIV2L2 (NP_056175.3).

Synonyms

Dob1; Mtr4; SKIV2L2; fSAP118; KIAA0052

Contact

 | www.abclonal.com

Product Information

Source

Rabbit

Isotype

IgG

Purification

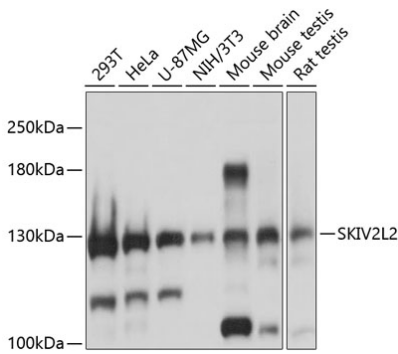
Affinity purification

Storage

Store at -20°C. Avoid freeze / thaw cycles.

Buffer: PBS with 0.02% sodium azide, 50% glycerol, pH7.3.

Validation Data



Western blot analysis of extracts of various cell lines, using SKIV2L2 antibody (A13258) at 1:3000 dilution.
Secondary antibody: HRP Goat Anti-Rabbit IgG (H+L) (A5014) at 1:10000 dilution.
Lysates/proteins: 25µg per lane.
Blocking buffer: 3% nonfat dry milk in TBST.
Detection: ECL Basic Kit (RM00020).
Exposure time: 1s.