

LRAT Rabbit pAb

Catalog No.: A13256

Basic Information

Catalog No.

A13256

Observed MW

26-55kDa

Calculated MW

25kDa

Category

Primary antibody

Applications

WB, IF

Cross-Reactivity

Human, Mouse, Rat

Recommended Dilutions

WB	1:1000 - 1:2000
IF	1:50 - 1:200

Contact

 | www.abclonal.com

Background

The protein encoded by this gene localizes to the endoplasmic reticulum, where it catalyzes the esterification of all-trans-retinol into all-trans-retinyl ester. This reaction is an important step in vitamin A metabolism in the visual system. Mutations in this gene have been associated with early-onset severe retinal dystrophy and Leber congenital amaurosis 14. Alternative splicing results in multiple transcript variants.

Immunogen Information

Gene ID	Swiss Prot
9227	O95237

Immunogen

Recombinant fusion protein containing a sequence corresponding to amino acids 1-194 of human LRAT (NP_004735.2).

Synonyms

LRAT;LCA14

Product Information

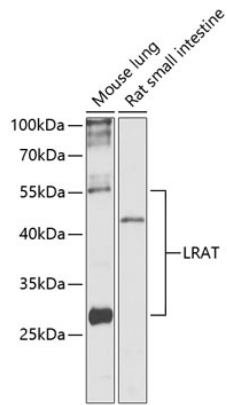
Source	Isotype	Purification
Rabbit	IgG	Affinity purification

Storage

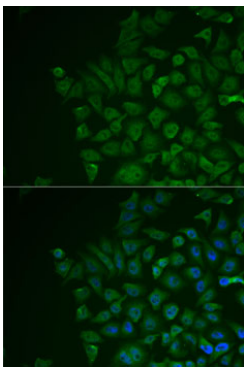
Store at -20°C. Avoid freeze / thaw cycles.

Buffer: PBS with 0.02% sodium azide, 50% glycerol, pH7.3.

Validation Data



Western blot analysis of extracts of various cell lines, using Lrat antibody (A13256) at 1:1000 dilution.
Secondary antibody: HRP Goat Anti-Rabbit IgG (H+L) (AS014) at 1:10000 dilution.
Lysates/proteins: 25ug per lane.
Blocking buffer: 3% nonfat dry milk in TBST.
Detection: ECL Basic Kit (RM00020).
Exposure time: 30s.



Immunofluorescence analysis of MCF7 cells using LRAT antibody (A13256). Blue: DAPI for nuclear staining.