

A13228

Leader in Biomolecular Solutions for Life Science



## CTAGE1 Rabbit pAb

Catalog No.: A13228

### Basic Information

**Observed MW**

85kDa

**Calculated MW**

85kDa

**Category**

Mouse Monoclonal Antibody

**Applications**

WB, ELISA

**Cross-Reactivity**

Human, Mouse, Rat

### Background

Predicted to be involved in endoplasmic reticulum to Golgi vesicle-mediated transport; protein secretion; and vesicle cargo loading. Predicted to be integral component of membrane. Predicted to be active in endoplasmic reticulum exit site and endoplasmic reticulum membrane.

### Recommended Dilutions

WB 1:1000 - 1:2000

### Immunogen Information

**Gene ID**

64693

**Swiss Prot**

Q96RT6

**Immunogen**

Recombinant fusion protein containing a sequence corresponding to amino acids 370-520 of human CTAGE1 (NP\_758441.2).

**Synonyms**

CTAGE; CT21.1; CT21.2; CTAGE-1; CTAGE-2; CTAGE1

### Contact



[www.abclonal.com](http://www.abclonal.com)

### Product Information

**Source**

Rabbit

**Isotype**

IgG

**Purification**

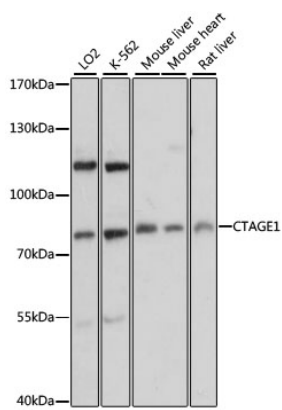
Affinity purification

**Storage**

Store at -20°C. Avoid freeze / thaw cycles.

Buffer: PBS with 0.01% thimerosal, 50% glycerol, pH 7.3.

# Validation Data



Western blot analysis of various lysates using CTAGE1 Rabbit pAb (A13228) at 1:3000 dilution.  
Secondary antibody: HRP Goat Anti-Rabbit IgG (H+L) (AS014) at 1:10000 dilution.  
Lysates/proteins: 25µg per lane.  
Blocking buffer: 3% nonfat dry milk in TBST.  
Detection: ECL Basic Kit (RM00020).  
Exposure time: 1s.