

A13221

Leader in Biomolecular Solutions for Life Science



FKBP14 Rabbit pAb

Catalog No.: A13221

Basic Information

Observed MW

22kDa

Calculated MW

24kDa

Category

Mouse Monoclonal Antibody

Applications

WB,ELISA

Cross-Reactivity

Human,Mouse,Rat

Background

The protein encoded by this gene is a member of the FK506-binding protein family of peptidyl-prolyl cis-trans isomerases. The encoded protein is found in the lumen of the endoplasmic reticulum, where it is thought to accelerate protein folding. Defects in this gene are a cause of a type of Ehlers-Danlos syndrome (EDS). Both a protein-coding variant and noncoding variants are transcribed from this gene.

Recommended Dilutions

WB 1:500 - 1:2000

Immunogen Information

Gene ID

55033

Swiss Prot

Q9NWM8

Immunogen

Recombinant fusion protein containing a sequence corresponding to amino acids 20-211 of human FKBP14 (NP_060416.1).

Synonyms

EDSKMH; FKBP22; IPBP12; EDSKSL2; FKBP14

Contact



www.abclonal.com

Product Information

Source

Rabbit

Isotype

IgG

Purification

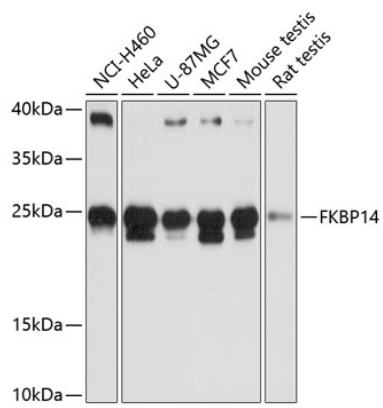
Affinity purification

Storage

Store at -20°C. Avoid freeze / thaw cycles.

Buffer: PBS with 0.01% thimerosal,50% glycerol,pH7.3.

Validation Data



Western blot analysis of various lysates using FKBP14 Rabbit pAb (A13221) at 1:3000 dilution.
Secondary antibody: HRP Goat Anti-Rabbit IgG (H+L) (AS014) at 1:10000 dilution.
Lysates/proteins: 25 μ g per lane.
Blocking buffer: 3% nonfat dry milk in TBST.
Detection: ECL Basic Kit (RM00020).
Exposure time: 10s.