

# RBM11 Rabbit pAb

Catalog No.: A13216

## Basic Information

### Observed MW

32kDa

### Calculated MW

32kDa

### Category

Primary antibody

### Applications

ELISA, WB

### Cross-Reactivity

Human, Mouse, Rat

## Background

Enables poly(U) RNA binding activity and protein homodimerization activity. Acts upstream of or within cellular response to oxidative stress and regulation of alternative mRNA splicing, via spliceosome. Located in nuclear speck.

## Recommended Dilutions

**WB** 1:500 - 1:2000

## Immunogen Information

### Gene ID

54033

### Swiss Prot

P57052

### Immunogen

Recombinant fusion protein containing a sequence corresponding to amino acids 1-281 of human RBM11 (NP\_658983.3).

### Synonyms

RBM11

## Contact

 | [www.abclonal.com](http://www.abclonal.com)

## Product Information

### Source

Rabbit

### Isotype

IgG

### Purification

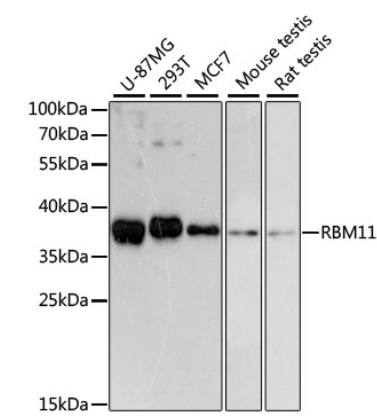
Affinity purification

### Storage

Store at -20°C. Avoid freeze / thaw cycles.

Buffer: PBS with 0.01% thimerosal, 50% glycerol, pH7.3.

# Validation Data



Western blot analysis of various lysates using RBM11 Rabbit pAb (A13216) at 1:3000 dilution. Secondary antibody: HRP Goat Anti-Rabbit IgG (H+L) (AS014) at 1:10000 dilution. Lysates/proteins: 25µg per lane. Blocking buffer: 3% nonfat dry milk in TBST. Detection: ECL Basic Kit (RM00020). Exposure time: 90s.