

PIWIL4 Rabbit pAb

Catalog No.: A13201

Basic Information

Observed MW

97kDa

Calculated MW

97kDa

Category

Primary antibody

Applications

ELISA, WB, IHC-P

Cross-Reactivity

Human, Mouse, Rat

Background

PIWIL4 belongs to the Argonaute family of proteins, which function in development and maintenance of germline stem cells (Sasaki et al., 2003 [PubMed 12906857]).

Recommended Dilutions

WB	1:500 - 1:1000
IHC-P	1:50 - 1:200

Immunogen Information

Gene ID	Swiss Prot
143689	Q7Z3Z4

Immunogen

Recombinant fusion protein containing a sequence corresponding to amino acids 260-460 of human PIWIL4 (NP_689644.2).

Synonyms

HIWI2; MIWI2; PIWIL4

Contact

 | www.abclonal.com

Product Information

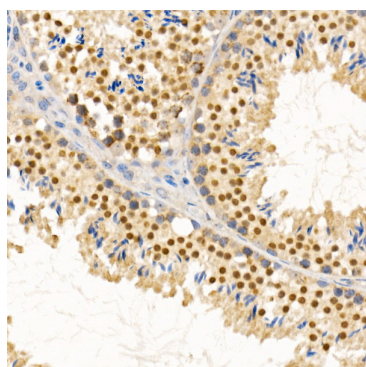
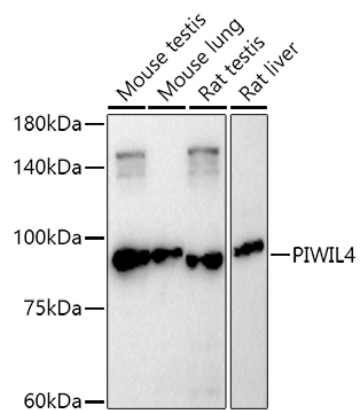
Source	Isotype	Purification
Rabbit	IgG	Affinity purification

Storage

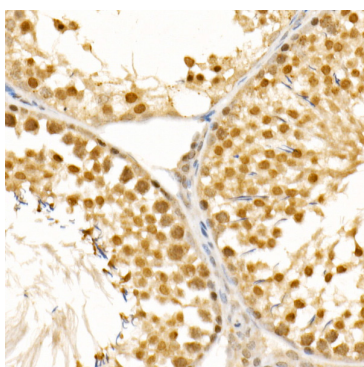
Store at -20°C. Avoid freeze / thaw cycles.

Buffer: PBS with 0.01% thimerosal, 50% glycerol, pH7.3.

Validation Data



Immunohistochemistry analysis of paraffin-embedded mouse testis using PIWIL4 Rabbit pAb (A13201) at dilution of 1:100 (40x lens). Perform high pressure antigen retrieval with 10 mM citrate buffer pH 6.0 before commencing with IHC staining protocol.



Immunohistochemistry analysis of paraffin-embedded rat testis using PIWIL4 Rabbit pAb (A13201) at dilution of 1:100 (40x lens). Perform high pressure antigen retrieval with 10 mM citrate buffer pH 6.0 before commencing with IHC staining protocol.