

# PON1 Rabbit pAb

Catalog No.: A1320

## Basic Information

### Observed MW

40kDa

### Calculated MW

40kDa

### Category

Primary antibody

### Applications

WB,FC

### Cross-Reactivity

Human

## Background

This gene encodes a member of the paraoxonase family of enzymes and exhibits lactonase and ester hydrolase activity. Following synthesis in the kidney and liver, the enzyme is secreted into the circulation, where it binds to high density lipoprotein (HDL) particles and hydrolyzes thiolactones and xenobiotics, including paraoxon, a metabolite of the insecticide parathion. Polymorphisms in this gene may be associated with coronary artery disease and diabetic retinopathy. The gene is found in a cluster of three related paraoxonase genes on chromosome 7.

## Recommended Dilutions

|           |               |
|-----------|---------------|
| <b>WB</b> | 1:200 - 1:500 |
| <b>FC</b> | 1:20 - 1:50   |

## Immunogen Information

### Gene ID

5444

### Swiss Prot

P27169

### Immunogen

A synthetic peptide of human PON1

### Synonyms

ESA; PON; MVCD5; PON1

## Contact

 | [www.abclonal.com](http://www.abclonal.com)

## Product Information

### Source

Rabbit

### Isotype

IgG

### Purification

Affinity purification

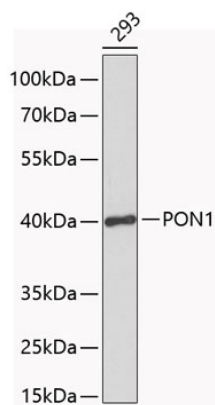
### Storage

Store at 4°C. Avoid freeze / thaw cycles.

Buffer: PBS with 0.02% sodium azide,pH7.3.

## Validation Data

---



Western blot analysis of extracts of 293 cells, using PON1 antibody (A1320).  
Secondary antibody: HRP Goat Anti-Rabbit IgG (H+L) (A5014) at 1:10000 dilution.  
Lysates/proteins: 25µg per lane.  
Blocking buffer: 3% nonfat dry milk in TBST.