

A13193

Leader in Biomolecular Solutions for Life Science



# PCDHGA1 Rabbit pAb

Catalog No.: A13193

## Basic Information

### Observed MW

90kDa

### Calculated MW

101kDa

### Category

Polyclonal Antibody

### Applications

WB, ELISA

### Cross-Reactivity

Rat

## Background

This gene is a member of the protocadherin gamma gene cluster, one of three related clusters tandemly linked on chromosome five. These gene clusters have an immunoglobulin-like organization, suggesting that a novel mechanism may be involved in their regulation and expression. The gamma gene cluster includes 22 genes divided into 3 subfamilies. Subfamily A contains 12 genes, subfamily B contains 7 genes and 2 pseudogenes, and the more distantly related subfamily C contains 3 genes. The tandem array of 22 large, variable region exons are followed by a constant region, containing 3 exons shared by all genes in the cluster. Each variable region exon encodes the extracellular region, which includes 6 cadherin ectodomains and a transmembrane region. The constant region exons encode the common cytoplasmic region. These neural cadherin-like cell adhesion proteins most likely play a critical role in the establishment and function of specific cell-cell connections in the brain. Alternative splicing has been described for the gamma cluster genes.

## Recommended Dilutions

WB 1:500 - 1:2000

## Immunogen Information

### Gene ID

56114

### Swiss Prot

Q9Y5H4

### Immunogen

Recombinant fusion protein containing a sequence corresponding to amino acids 240-360 of human PCDHGA1 (NP\_114382.1).

### Synonyms

PCDH-GAMMA-A1; PCDHGA1

## Contact



[www.abclonal.com](http://www.abclonal.com)

## Product Information

### Source

Rabbit

### Isotype

IgG

### Purification

Affinity purification

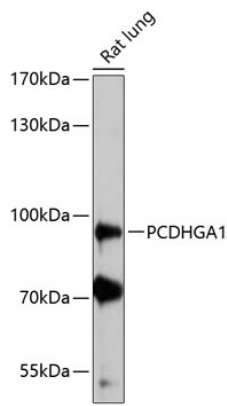
### Storage

Store at -20°C. Avoid freeze / thaw cycles.

Buffer: PBS with 0.01% thimerosal, 50% glycerol, pH 7.3.

## Validation Data

---



Western blot analysis of lysates from rat lung, using PCDHGA1 Rabbit pAb (A13193) at 1:3000 dilution.  
Secondary antibody: HRP Goat Anti-Rabbit IgG (H+L) (AS014) at 1:10000 dilution.  
Lysates/proteins: 25 $\mu$ g per lane.  
Blocking buffer: 3% nonfat dry milk in TBST.  
Detection: ECL Basic Kit (RM00020).  
Exposure time: 90s.