

A13159

Leader in Biomolecular Solutions for Life Science



RBM14 Rabbit pAb

Catalog No.: A13159 **1 Publications**

Basic Information

Observed MW

75kDa

Calculated MW

69kDa

Category

Mouse Monoclonal Antibody

Applications

WB,IF/ICC,ELISA

Cross-Reactivity

Human,Mouse,Rat

Background

This gene encodes a ribonucleoprotein that functions as a general nuclear coactivator, and an RNA splicing modulator. This protein contains two RNA recognition motifs (RRM) at the N-terminus, and multiple hexapeptide repeat domain at the C-terminus that interacts with thyroid hormone receptor-binding protein (TRBP), and is required for transcription activation. Alternatively spliced transcript variants encoding different isoforms (with opposing effects on transcription) have been described for this gene.

Recommended Dilutions

WB	1:500 - 1:1000
IF/ICC	1:100 - 1:500

Immunogen Information

Gene ID

10432

Swiss Prot

Q96PK6

Immunogen

Recombinant fusion protein containing a sequence corresponding to amino acids 110-220 of human RBM14 (NP_006319.1).

Synonyms

SIP; COAA; PSP2; SYTIP1; TMEM137; RBM14

Contact



www.abclonal.com

Product Information

Source

Rabbit

Isotype

IgG

Purification

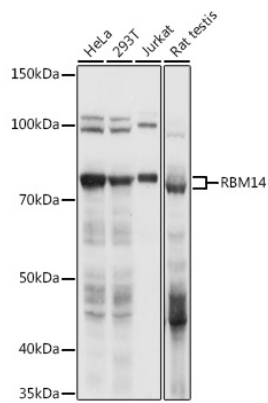
Affinity purification

Storage

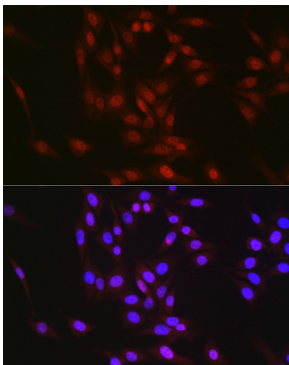
Store at -20°C. Avoid freeze / thaw cycles.

Buffer: PBS with 0.01% thimerosal,50% glycerol,pH7.3.

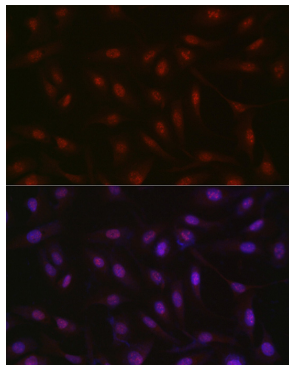
Validation Data



Western blot analysis of various lysates using RBM14 Rabbit pAb (A13159) at 1:1000 dilution. Secondary antibody: HRP Goat Anti-Rabbit IgG (H+L) (AS014) at 1:10000 dilution. Lysates/proteins: 25µg per lane. Blocking buffer: 3% nonfat dry milk in TBST. Detection: ECL Basic Kit (RM00020). Exposure time: 1s.



Immunofluorescence analysis of NIH/3T3 cells using RBM14 Rabbit pAb (A13159) at dilution of 1:300 (40x lens). Secondary antibody: Cy3 Goat Anti-Rabbit IgG (H+L) (AS007) at 1:500 dilution. Blue: DAPI for nuclear staining.



Immunofluorescence analysis of U2OS cells using RBM14 Rabbit pAb (A13159) at dilution of 1:300 (40x lens). Secondary antibody: Cy3 Goat Anti-Rabbit IgG (H+L) (AS007) at 1:500 dilution. Blue: DAPI for nuclear staining.