

# USE1 Rabbit pAb

Catalog No.: A13151

## Basic Information

---

### Observed MW

29kDa

### Calculated MW

29kDa

### Category

Primary antibody

### Applications

ELISA, WB, IF/ICC

### Cross-Reactivity

Human, Mouse

## Background

---

Predicted to enable SNAP receptor activity. Predicted to be involved in several processes, including lysosomal transport; protein catabolic process; and retrograde vesicle-mediated transport, Golgi to endoplasmic reticulum. Predicted to act upstream of or within endoplasmic reticulum tubular network organization and regulation of ER to Golgi vesicle-mediated transport. Located in endoplasmic reticulum.

## Recommended Dilutions

---

WB 1:1000 - 1:2000

IF/ICC 1:50 - 1:200

## Immunogen Information

---

### Gene ID

55850

### Swiss Prot

Q9NZ43

### Immunogen

Recombinant fusion protein containing a sequence corresponding to amino acids 1-259 of human USE1 (NP\_060937.1).

### Synonyms

D12; P31; SLT1; MDS032; USE1

## Contact

---

 | [www.abclonal.com](http://www.abclonal.com)

## Product Information

---

### Source

Rabbit

### Isotype

IgG

### Purification

Affinity purification

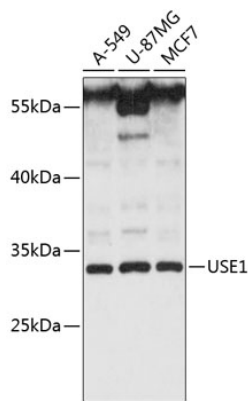
### Storage

Store at -20°C. Avoid freeze / thaw cycles.

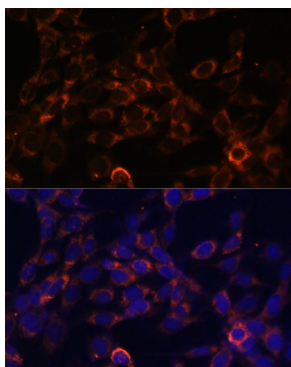
Buffer: PBS with 0.01% thimerosal, 50% glycerol, pH7.3.

## Validation Data

---



Western blot analysis of various lysates using USE1 Rabbit pAb (A13151) at 1:3000 dilution.  
Secondary antibody: HRP Goat Anti-Rabbit IgG (H+L) (AS014) at 1:10000 dilution.  
Lysates/proteins: 25µg per lane.  
Blocking buffer: 3% nonfat dry milk in TBST.  
Detection: ECL Basic Kit (RM00020).  
Exposure time: 30s.



Immunofluorescence analysis of NIH-3T3 cells using USE1 Rabbit pAb (A13151) at dilution of 1:100 (40x lens). Secondary antibody: Cy3 Goat Anti-Rabbit IgG (H+L) (AS007) at 1:500 dilution. Blue: DAPI for nuclear staining.