

USE1 Rabbit pAb

Catalog No.: A13147

Basic Information

Observed MW

29kDa

Calculated MW

29kDa

Category

Primary antibody

Applications

ELISA, WB

Cross-Reactivity

Mouse, Rat

Background

Predicted to enable SNAP receptor activity. Predicted to be involved in several processes, including lysosomal transport; protein catabolic process; and retrograde vesicle-mediated transport, Golgi to endoplasmic reticulum. Predicted to act upstream of or within endoplasmic reticulum tubular network organization and regulation of ER to Golgi vesicle-mediated transport. Located in endoplasmic reticulum.

Recommended Dilutions

WB 1:500 - 1:2000

Immunogen Information

Gene ID

55850

Swiss Prot

Q9NZ43

Immunogen

Recombinant fusion protein containing a sequence corresponding to amino acids 1-259 of human USE1 (NP_060937.1).

Synonyms

D12; P31; SLT1; MDS032; USE1

Contact

 | www.abclonal.com

Product Information

Source

Rabbit

Isotype

IgG

Purification

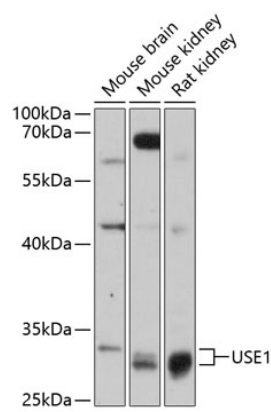
Affinity purification

Storage

Store at -20°C. Avoid freeze / thaw cycles.

Buffer: PBS with 0.01% thimerosal, 50% glycerol, pH 7.3.

Validation Data



Western blot analysis of extracts of various cell lines, using USE1 antibody (A13147) at 1:3000 dilution.
Secondary antibody: HRP Goat Anti-Rabbit IgG (H+L) (A5014) at 1:10000 dilution.
Lysates/proteins: 25µg per lane.
Blocking buffer: 3% nonfat dry milk in TBST.
Detection: ECL Basic Kit (RM00020).
Exposure time: 30s.