

A13142

Leader in Biomolecular Solutions for Life Science



MRGPRX1 Rabbit pAb

Catalog No.: A13142

Basic Information

Observed MW

36kDa

Calculated MW

36kDa

Category

Polyclonal Antibody

Applications

WB, ELISA

Cross-Reactivity

Mouse, Rat

Background

Enables transmembrane signaling receptor activity. Involved in cell surface receptor signaling pathway and response to chloroquine. Predicted to be located in cell surface.

Recommended Dilutions

WB 1:500 - 1:2000

Immunogen Information

Gene ID

259249

Swiss Prot

Q96LB2

Immunogen

Recombinant fusion protein containing a sequence corresponding to amino acids 263-322 of human MRGPRX1 (NP_671732.3).

Synonyms

GPCR; MGRG2; MRGX1; SNSR4; MRGPRX1

Contact



www.abclonal.com

Product Information

Source

Rabbit

Isotype

IgG

Purification

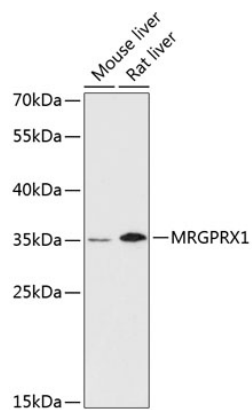
Affinity purification

Storage

Store at -20°C. Avoid freeze / thaw cycles.

Buffer: PBS with 0.01% thimerosal, 50% glycerol, pH 7.3.

Validation Data



Western blot analysis of various lysates using MRGPRX1 Rabbit pAb (A13142) at 1:3000 dilution.
Secondary antibody: HRP Goat Anti-Rabbit IgG (H+L) (AS014) at 1:10000 dilution.
Lysates/proteins: 25µg per lane.
Blocking buffer: 3% nonfat dry milk in TBST.
Detection: ECL Basic Kit (RM00020).
Exposure time: 90s.