

A13120

Leader in Biomolecular Solutions for Life Science



RBM26 Rabbit pAb

Catalog No.: A13120

Basic Information

Observed MW

113kDa

Calculated MW

114kDa

Category

Mouse Monoclonal Antibody

Applications

WB, ELISA

Cross-Reactivity

Mouse, Rat

Background

Enables RNA binding activity. Predicted to be involved in mRNA processing. Predicted to be active in nucleus.

Recommended Dilutions

WB 1:500 - 1:2000

Immunogen Information

Gene ID

64062

Swiss Prot

Q5T8P6

Immunogen

Recombinant fusion protein containing a sequence corresponding to amino acids 65-140 of human RBM26 (NP_071401.3).

Synonyms

ARRS2; SE70-2; ZC3H17; PRO1777; C13orf10; PPP1R132; RBM26

Contact



www.abclonal.com

Product Information

Source

Rabbit

Isotype

IgG

Purification

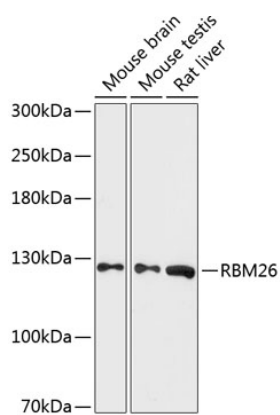
Affinity purification

Storage

Store at -20°C. Avoid freeze / thaw cycles.

Buffer: PBS with 0.01% thimerosal, 50% glycerol, pH 7.3.

Validation Data



Western blot analysis of various lysates using RBM26 Rabbit pAb (A13120) at 1:3000 dilution.
Secondary antibody: HRP Goat Anti-Rabbit IgG (H+L) (A5014) at 1:10000 dilution.
Lysates/proteins: 25µg per lane.
Blocking buffer: 3% nonfat dry milk in TBST.
Detection: ECL Basic Kit (RM00020).
Exposure time: 90s.