

A13109

Leader in Biomolecular Solutions for Life Science



# ANO2 Rabbit pAb

Catalog No.: A13109

## Basic Information

---

### Observed MW

114kDa

### Calculated MW

114kDa

### Category

Polyclonal Antibody

### Applications

WB,IHC-P,ELISA

### Cross-Reactivity

Human,Mouse,Rat

## Background

---

ANO2 belongs to a family of calcium-activated chloride channels (CaCCs) (reviewed by Hartzell et al., 2009 [PubMed 19015192]).

## Recommended Dilutions

---

WB 1:1000 - 1:2000

IHC-P 1:50 - 1:200

## Immunogen Information

---

### Gene ID

57101

### Swiss Prot

Q9NQ90

### Immunogen

Recombinant fusion protein containing a sequence corresponding to amino acids 1-200 of human ANO2 (NP\_001265526.1).

### Synonyms

C12orf3; TMEM16B; ANO2

## Contact

---



[www.abclonal.com](http://www.abclonal.com)

## Product Information

---

### Source

Rabbit

### Isotype

IgG

### Purification

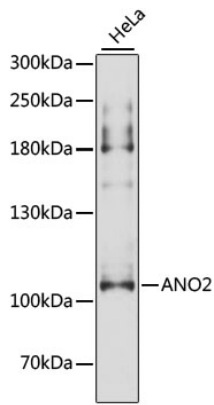
Affinity purification

### Storage

Store at -20°C. Avoid freeze / thaw cycles.

Buffer: PBS with 0.01% thimerosal, 50% glycerol, pH7.3.

## Validation Data



Western blot analysis of lysates from HeLa cells, using ANO2 Rabbit pAb (A13109) at 1:3000 dilution.

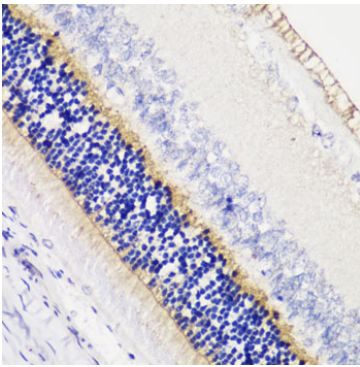
Secondary antibody: HRP Goat Anti-Rabbit IgG (H+L) (AS014) at 1:10000 dilution.

Lysates/proteins: 25µg per lane.

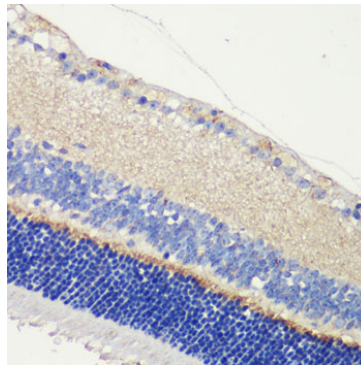
Blocking buffer: 3% nonfat dry milk in TBST.

Detection: ECL Enhanced Kit (RM00021).

Exposure time: 20s.



Immunohistochemistry analysis of paraffin-embedded rat retina using ANO2 Rabbit pAb (A13109) at dilution of 1:200 (40x lens). Perform microwave antigen retrieval with 10 mM PBS buffer pH 7.2 before commencing with IHC staining protocol.



Immunohistochemistry analysis of paraffin-embedded mouse retina using ANO2 Rabbit pAb (A13109) at dilution of 1:200 (40x lens). Perform microwave antigen retrieval with 10 mM PBS buffer pH 7.2 before commencing with IHC staining protocol.