

A1296

Leader in Biomolecular Solutions for Life Science



DRD2 Rabbit pAb

Catalog No.: A1296

Basic Information

Observed MW

51kDa

Calculated MW

51kDa

Category

Polyclonal Antibody

Applications

WB

Cross-Reactivity

Human, Mouse

Background

This gene encodes the D2 subtype of the dopamine receptor. This G-protein coupled receptor inhibits adenylyl cyclase activity. A missense mutation in this gene causes myoclonus dystonia; other mutations have been associated with schizophrenia. Alternative splicing of this gene results in two transcript variants encoding different isoforms. A third variant has been described, but it has not been determined whether this form is normal or due to aberrant splicing.

Recommended Dilutions

WB 1:500 - 1:1000

Immunogen Information

Gene ID

1813

Swiss Prot

P14416

Immunogen

A synthetic peptide of human DRD2

Synonyms

D2R; D2DR; DRD2

Contact



www.abclonal.com

Product Information

Source

Rabbit

Isotype

IgG

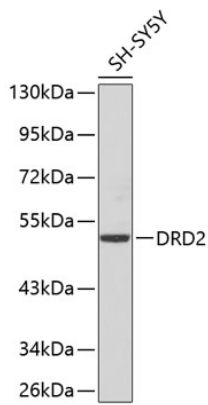
Purification

Affinity purification

Storage

Store at 4°C. Avoid freeze / thaw cycles.
Buffer: PBS with 0.02% sodium azide, pH7.3.

Validation Data



Western blot analysis of extracts of SH-SY5Y cells, using DRD2 antibody (A1296).
Secondary antibody: HRP Goat Anti-Rabbit IgG (H+L) (AS014) at 1:10000 dilution.
Lysates/proteins: 25µg per lane.
Blocking buffer: 3% nonfat dry milk in TBST.