

Fibronectin Rabbit pAb

Catalog No.: A12932 **10 Publications**

Basic Information

Catalog No.

A12932

Observed MW

272kDa

Calculated MW

71-73kDa/221-272kDa

Category

Primary antibody

Applications

WB, IHC, IF

Cross-Reactivity

Human, Mouse, Rat

Recommended Dilutions

WB	1:500 - 1:1000
IHC	1:50 - 1:200
IF	1:50 - 1:200

Contact

 | www.abclonal.com

Background

This gene encodes fibronectin, a glycoprotein present in a soluble dimeric form in plasma, and in a dimeric or multimeric form at the cell surface and in extracellular matrix. The encoded preproprotein is proteolytically processed to generate the mature protein. Fibronectin is involved in cell adhesion and migration processes including embryogenesis, wound healing, blood coagulation, host defense, and metastasis. The gene has three regions subject to alternative splicing, with the potential to produce 20 different transcript variants, at least one of which encodes an isoform that undergoes proteolytic processing. The full-length nature of some variants has not been determined.

Immunogen Information

Gene ID	Swiss Prot
2335	P02751

Immunogen

Recombinant fusion protein containing a sequence corresponding to amino acids 2200-2355 of human Fibronectin (NP_002017.1).

Synonyms

FN1;CIG;ED-B;FINC;FN;FNZ;GFND;GFND2;LETS;MSF;fibronectin

Product Information

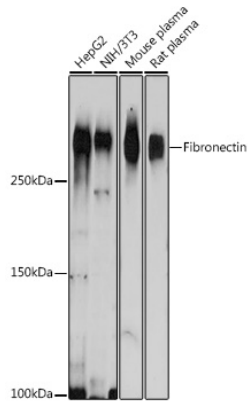
Source	Isotype	Purification
Rabbit	IgG	Affinity purification

Storage

Store at -20°C. Avoid freeze / thaw cycles.

Buffer: PBS with 0.02% sodium azide, 50% glycerol, pH7.3.

Validation Data



Western blot analysis of extracts of various cell lines, using Fibronectin Rabbit pAb (A12932) at 1:1000 dilution.

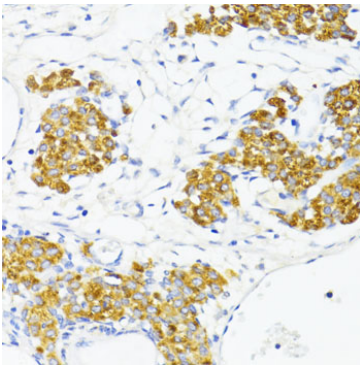
Secondary antibody: HRP Goat Anti-Rabbit IgG (H+L) (AS014) at 1:10000 dilution.

Lysates/proteins: 25ug per lane.

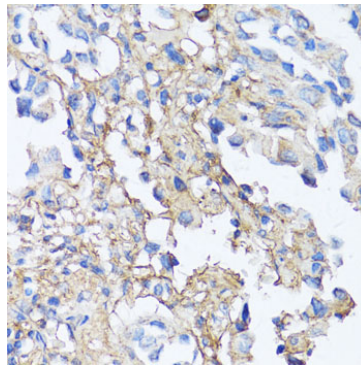
Blocking buffer: 3% nonfat dry milk in TBST.

Detection: ECL Basic Kit (RM00020).

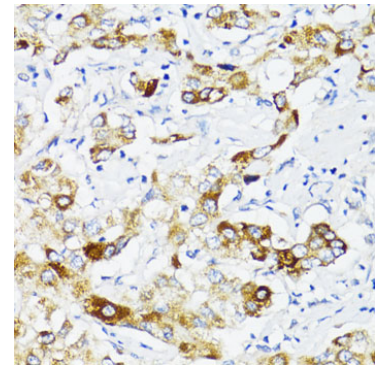
Exposure time: 10s.



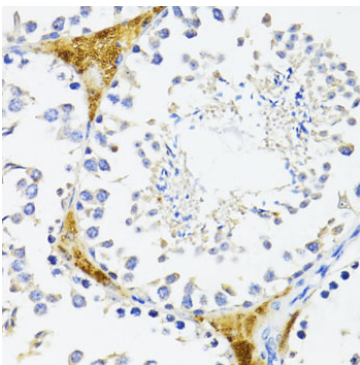
Immunohistochemistry of paraffin-embedded rat ovary using Fibronectin antibody (A12932) at dilution of 1:100 (40x lens).



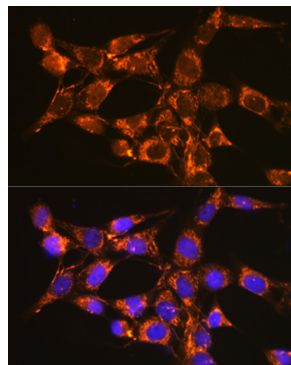
Immunohistochemistry of paraffin-embedded human lung cancer using Fibronectin antibody (A12932) at dilution of 1:150 (40x lens).



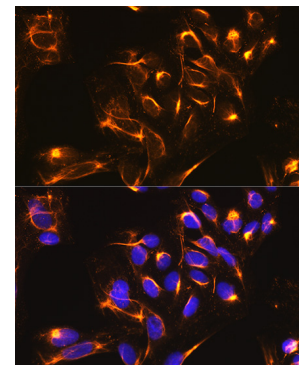
Immunohistochemistry of paraffin-embedded human liver cancer using Fibronectin antibody (A12932) at dilution of 1:100 (40x lens).



Immunohistochemistry of paraffin-embedded mouse leydig cells using Fibronectin antibody (A12932) at dilution of 1:100 (40x lens).



Immunofluorescence analysis of NIH/3T3 cells using Fibronectin antibody (A12932) at dilution of 1:100. Blue: DAPI for nuclear staining.



Immunofluorescence analysis of U2OS cells using Fibronectin antibody (A12932) at dilution of 1:100. Blue: DAPI for nuclear staining.