

AASS Rabbit pAb

Catalog No.: A12863

Basic Information

Observed MW

102kDa

Calculated MW

102kDa

Category

Primary antibody

Applications

ELISA, WB

Cross-Reactivity

Human, Mouse, Rat

Background

This gene encodes a bifunctional enzyme that catalyzes the first two steps in the mammalian lysine degradation pathway. The N-terminal and the C-terminal portions of this enzyme contain lysine-ketoglutarate reductase and saccharopine dehydrogenase activity, respectively, resulting in the conversion of lysine to alpha-amino adipic semialdehyde. Mutations in this gene are associated with familial hyperlysinemia.

Recommended Dilutions

WB 1:500 - 1:1000

Immunogen Information

Gene ID

10157

Swiss Prot

Q9UDR5

Immunogen

Recombinant fusion protein containing a sequence corresponding to amino acids 180-400 of human AASS (NP_005754.2).

Synonyms

LKRSDH; LORS DH; LKR/SDH; AASS

Contact

 | www.abclonal.com

Product Information

Source

Rabbit

Isotype

IgG

Purification

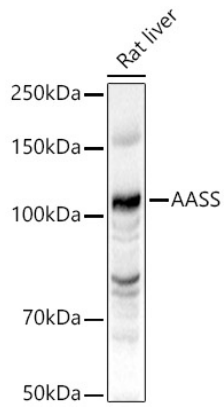
Affinity purification

Storage

Store at -20°C. Avoid freeze / thaw cycles.

Buffer: PBS with 0.01% thimerosal, 50% glycerol, pH 7.3.

Validation Data



Western blot analysis of lysates from Rat liver, using AASS Rabbit pAb (A12863) at 1:1000 dilution.
Secondary antibody: HRP Goat Anti-Rabbit IgG (H+L) (AS014) at 1:10000 dilution.
Lysates/proteins: 25 μ g per lane.
Blocking buffer: 3% nonfat dry milk in TBST.
Detection: ECL Basic Kit (RM00020).
Exposure time: 1s.