

CDR2 Rabbit pAb

Catalog No.: A12735

Basic Information

Observed MW

51kDa

Calculated MW

52kDa

Category

Primary antibody

Applications

WB

Cross-Reactivity

Human

Background

Predicted to be located in cytoplasm.

Recommended Dilutions

WB 1:500 - 1:2000

Immunogen Information

Gene ID

1039

Swiss Prot

Q01850

Immunogen

A synthetic peptide of human CDR2

Synonyms

Yo; CDR62; CDR2

Contact

 | www.abclonal.com

Product Information

Source

Rabbit

Isotype

IgG

Purification

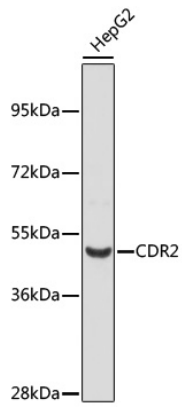
Affinity purification

Storage

Store at 4°C. Avoid freeze / thaw cycles.

Buffer: PBS with 0.02% sodium azide, pH7.3.

Validation Data



Western blot analysis of extracts of HepG2 cells, using CDR2 antibody (A12735) at dilution.
Secondary antibody: HRP Goat Anti-Rabbit IgG (H+L) (AS014) at 1:10000 dilution.
Lysates/proteins: 25µg per lane.
Blocking buffer: 3% nonfat dry milk in TBST.