

A12481

Leader in Biomolecular Solutions for Life Science



Alpha-1 Antitrypsin (SERPINA1) Rabbit pAb

Catalog No.: A12481

Basic Information

Observed MW

45kDa,50kDa

Calculated MW

47kDa

Category

Polyclonal Antibody

Applications

WB,IF/ICC,ELISA

Cross-Reactivity

Human,Mouse,Rat

Background

The protein encoded by this gene is a serine protease inhibitor belonging to the serpin superfamily whose targets include elastase, plasmin, thrombin, trypsin, chymotrypsin, and plasminogen activator. This protein is produced in the liver, the bone marrow, by lymphocytic and monocytic cells in lymphoid tissue, and by the Paneth cells of the gut. Defects in this gene are associated with chronic obstructive pulmonary disease, emphysema, and chronic liver disease. Several transcript variants encoding the same protein have been found for this gene.

Recommended Dilutions

WB	1:500 - 1:2000
IF/ICC	1:50 - 1:200

Immunogen Information

Gene ID	Swiss Prot
5265	P01009

Immunogen

Recombinant fusion protein containing a sequence corresponding to amino acids 25-315 of human Alpha-1 Antitrypsin (Alpha-1 Antitrypsin (SERPINA1)) (NP_000286.3).

Synonyms

PI; A1A; AAT; P11; A1AT; nNIF; PRO2275; alpha1AT; Alpha-1 Antitrypsin (SERPINA1)

Contact

 www.abclonal.com

Product Information

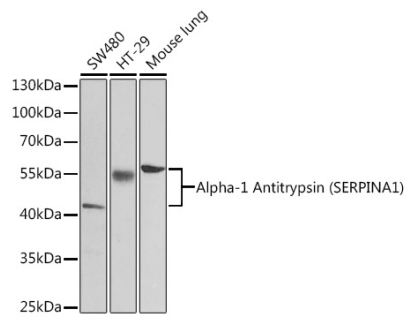
Source	Isotype	Purification
Rabbit	IgG	Affinity purification

Storage

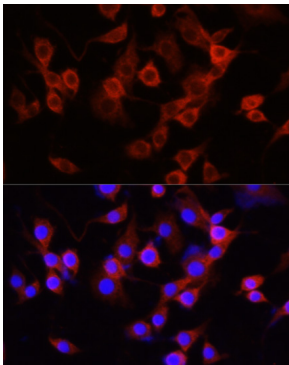
Store at -20°C. Avoid freeze / thaw cycles.

Buffer: PBS with 0.02% sodium azide,50% glycerol,pH7.3.

Validation Data



Western blot analysis of extracts of various cell lines, using Alpha-1 Antitrypsin (Alpha-1 Antitrypsin (SERPINA1)) antibody (A12481) at 1:1000 dilution.
Secondary antibody: HRP Goat Anti-Rabbit IgG (H+L) (AS014) at 1:10000 dilution.
Lysates/proteins: 25µg per lane.
Blocking buffer: 3% nonfat dry milk in TBST.



Immunofluorescence analysis of PC-12 cells using Alpha-1 Antitrypsin (Alpha-1 Antitrypsin (SERPINA1)) antibody (A12481) at dilution of 1:100 (40x lens). Blue: DAPI for nuclear staining.