

A12380

Leader in Biomolecular Solutions for Life Science



# AGRB2 Rabbit pAb

Catalog No.: A12380

## Basic Information

---

### Observed MW

173kDa

### Calculated MW

173kDa

### Category

Polyclonal Antibody

### Applications

WB,ELISA

### Cross-Reactivity

Mouse,Rat

## Background

---

This gene encodes a seven-span transmembrane protein that is thought to be a member of the secretin receptor family. The encoded protein is a brain-specific inhibitor of angiogenesis. The mature peptide may be further cleaved into additional products (PMID:20367554). Alternative splicing results in multiple transcript variants.

## Recommended Dilutions

---

WB 1:500 - 1:2000

## Immunogen Information

---

### Gene ID

576

### Swiss Prot

O60241

### Immunogen

A synthetic peptide corresponding to a sequence within amino acids 700-800 of human AGRB2 (NP\_001281264.1).

### Synonyms

BAI2; AGRB2

## Contact

---



[www.abclonal.com](http://www.abclonal.com)

## Product Information

---

### Source

Rabbit

### Isotype

IgG

### Purification

Affinity purification

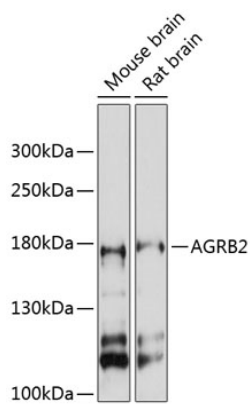
### Storage

Store at -20°C. Avoid freeze / thaw cycles.

Buffer: PBS with 0.01% thimerosal,50% glycerol,pH7.3.

## Validation Data

---



Western blot analysis of various lysates using AGRB2 Rabbit pAb (A12380) at 1:3000 dilution.  
Secondary antibody: HRP Goat Anti-Rabbit IgG (H+L) (AS014) at 1:10000 dilution.  
Lysates/proteins: 25 $\mu$ g per lane.  
Blocking buffer: 3% nonfat dry milk in TBST.  
Detection: ECL Basic Kit (RM00020).  
Exposure time: 30s.