

PGC1 α Rabbit pAb

Catalog No.: A12348 **18 Publications**

Basic Information

Catalog No.

A12348

Observed MW

100kDa

Calculated MW

14kDa/30kDa/31kDa/33kDa/77kDa/89kDa/91kDa

Category

Primary antibody

Applications

WB, IHC, IF

Cross-Reactivity

Human, Mouse, Rat

Recommended Dilutions

WB 1:500 - 1:2000**IHC** 1:50 - 1:200**IF** 1:50 - 1:200

Contact

 | www.abclonal.com

Background

The protein encoded by this gene is a transcriptional coactivator that regulates the genes involved in energy metabolism. This protein interacts with PPARgamma, which permits the interaction of this protein with multiple transcription factors. This protein can interact with, and regulate the activities of, cAMP response element binding protein (CREB) and nuclear respiratory factors (NRFs). It provides a direct link between external physiological stimuli and the regulation of mitochondrial biogenesis, and is a major factor that regulates muscle fiber type determination. This protein may be also involved in controlling blood pressure, regulating cellular cholesterol homoeostasis, and the development of obesity.

Immunogen Information

Gene ID

10891

Swiss Prot

Q9UBK2

Immunogen

A synthetic peptide corresponding to a sequence within amino acids 700 to the C-terminus of human PGC1 α (NP_037393.1).

Synonyms

PPARGC1A;LEM6;PGC-1(alpha);PGC-1alpha;PGC-1v;PGC1;PGC1A;PPARGC1;PPARG coactivator 1 alpha;PGC1 alpha

Product Information

Source

Rabbit

Isotype

IgG

Purification

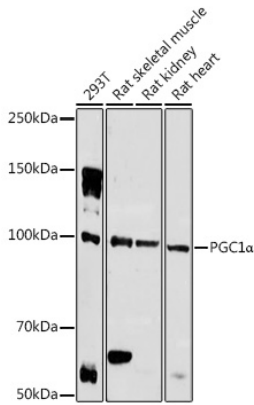
Affinity purification

Storage

Store at -20°C. Avoid freeze / thaw cycles.

Buffer: PBS with 0.02% sodium azide,50% glycerol,pH7.3.

Validation Data



Western blot analysis of extracts of various cell lines, using PGC1 α antibody (A12348) at 1:1000 dilution.

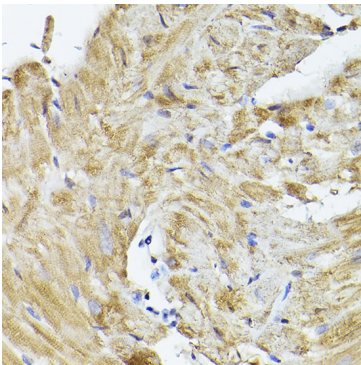
Secondary antibody: HRP Goat Anti-Rabbit IgG (H+L) (AS014) at 1:10000 dilution.

Lysates/proteins: 25ug per lane.

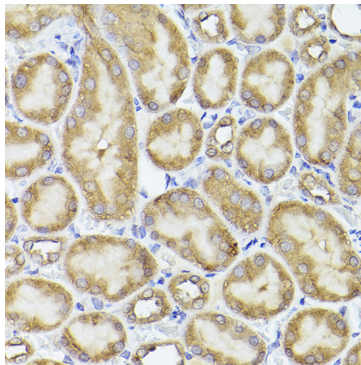
Blocking buffer: 3% nonfat dry milk in TBST.

Detection: ECL Basic Kit (RM00020).

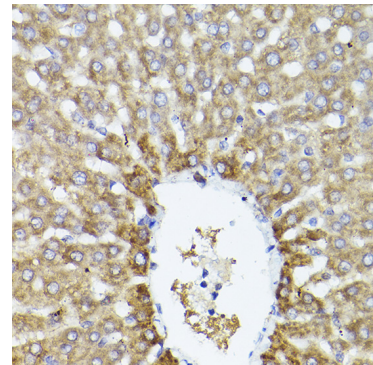
Exposure time: 180s.



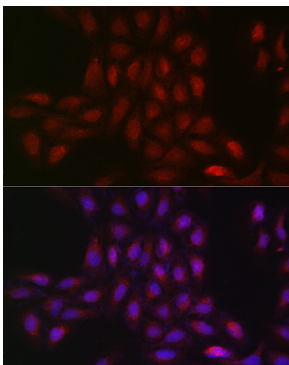
Immunohistochemistry of paraffin-embedded mouse heart using PGC1 α Rabbit pAb (A12348) at dilution of 1:50 (40x lens).



Immunohistochemistry of paraffin-embedded rat kidney using PGC1 α Rabbit pAb (A12348) at dilution of 1:50 (40x lens).



Immunohistochemistry of paraffin-embedded rat liver using PGC1 α Rabbit pAb (A12348) at dilution of 1:50 (40x lens).



Immunofluorescence analysis of U2OS cells using PGC1 α Rabbit pAb (A12348) at dilution of 1:50 (40x lens). Blue: DAPI for nuclear staining.