

# ACSS2 Rabbit mAb

Catalog No.: A12334 **Recombinant** **1 Publications**

## Basic Information

### Observed MW

79kDa

### Calculated MW

79kDa

### Category

Primary antibody

### Applications

ELISA, WB

### Cross-Reactivity

Human, Mouse, Rat

### CloneNo number

ARC0690

## Recommended Dilutions

**WB** 1:500 - 1:1000

## Background

This gene encodes a cytosolic enzyme that catalyzes the activation of acetate for use in lipid synthesis and energy generation. The protein acts as a monomer and produces acetyl-CoA from acetate in a reaction that requires ATP. Expression of this gene is regulated by sterol regulatory element-binding proteins, transcription factors that activate genes required for the synthesis of cholesterol and unsaturated fatty acids. Alternative splicing results in multiple transcript variants.

## Immunogen Information

### Gene ID

55902

### Swiss Prot

Q9NR19

### Immunogen

A synthetic peptide corresponding to a sequence within amino acids 50-150 of human ACSS2 (Q9NR19).

### Synonyms

ACS; ACSA; ACAS2; ACECS; AceCS1; dj1161H23.1; ACSS2

## Contact

 | [www.abclonal.com](http://www.abclonal.com)

## Product Information

### Source

Rabbit

### Isotype

IgG

### Purification

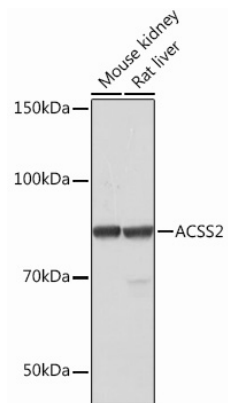
Affinity purification

### Storage

Store at -20°C. Avoid freeze / thaw cycles.

Buffer: PBS with 0.02% sodium azide, 0.05% BSA, 50% glycerol, pH7.3.

## Validation Data



Western blot analysis of extracts of various cell lines, using ACSS2 Rabbit mAb (A12334) at 1: 1000 dilution.

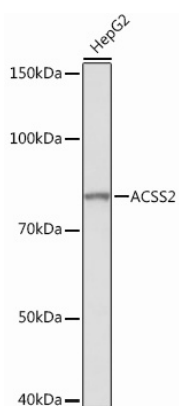
Secondary antibody: HRP Goat Anti-Rabbit IgG (H+L) (AS014) at 1:10000 dilution.

Lysates/proteins: 25µg per lane.

Blocking buffer: 3% nonfat dry milk in TBST.

Detection: ECL Basic Kit (RM00020).

Exposure time: 60s.



Western blot analysis of extracts of HepG2 cells, using ACSS2 Rabbit mAb (A12334) at 1: 1000 dilution.

Secondary antibody: HRP Goat Anti-Rabbit IgG (H+L) (AS014) at 1:10000 dilution.

Lysates/proteins: 25µg per lane.

Blocking buffer: 3% nonfat dry milk in TBST.

Detection: ECL Basic Kit (RM00020).

Exposure time: 3min.