

AMPK α 1 Rabbit pAb

Catalog No.: A1229 **10 Publications**

Basic Information

Catalog No.

A1229

Observed MW

64kDa

Calculated MW

64kDa/65kDa

Category

Primary antibody

Applications

WB, IF

Cross-Reactivity

Human, Mouse, Rat

Recommended Dilutions

WB	1:500 - 1:2000
IF	1:50 - 1:200

Contact

 | www.abclonal.com

Background

The protein encoded by this gene belongs to the ser/thr protein kinase family. It is the catalytic subunit of the 5'-prime-AMP-activated protein kinase (AMPK). AMPK is a cellular energy sensor conserved in all eukaryotic cells. The kinase activity of AMPK is activated by the stimuli that increase the cellular AMP/ATP ratio. AMPK regulates the activities of a number of key metabolic enzymes through phosphorylation. It protects cells from stresses that cause ATP depletion by switching off ATP-consuming biosynthetic pathways. Alternatively spliced transcript variants encoding distinct isoforms have been observed.

Immunogen Information

Gene ID	Swiss Prot
5562	Q13131

Immunogen

Recombinant fusion protein containing a sequence corresponding to amino acids 1-300 of human AMPK α 1 alpha 1 (NP_006242.5).

SynonymsPRKAA1;AMPK;AMPK α 1

Product Information

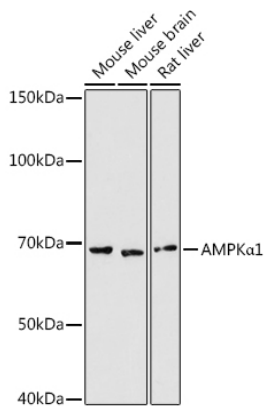
Source	Isotype	Purification
Rabbit	IgG	Affinity purification

Storage

Store at -20°C. Avoid freeze / thaw cycles.

Buffer: PBS with 0.02% sodium azide,50% glycerol,pH7.3.

Validation Data



Western blot analysis of extracts of various cell lines, using AMPK α 1 antibody (A1229) at 1:500 dilution.

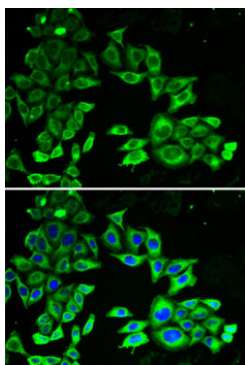
Secondary antibody: HRP Goat Anti-Rabbit IgG (H+L) (AS014) at 1:10000 dilution.

Lysates/proteins: 25ug per lane.

Blocking buffer: 3% nonfat dry milk in TBST.

Detection: ECL Basic Kit (RM00020).

Exposure time: 180s.



Immunofluorescence analysis of HeLa cells using AMPK α 1 alpha 1 antibody (A1229).

Blue: DAPI for nuclear staining.