

β -Tubulin Rabbit mAb

Catalog No.: A12289

Recombinant

1 Publications

Basic Information

Catalog No.

A12289

Observed MW

55kDa

Calculated MW

50kDa

Category

Primary antibody

Applications

WB, IF

Cross-Reactivity

Human, Mouse, Rat

Recommended Dilutions

WB	1:500 - 1:2000
IF	1:50 - 1:200

Contact

 | www.abclonal.com

Background

This gene encodes a beta tubulin protein. This protein forms a dimer with alpha tubulin and acts as a structural component of microtubules. Mutations in this gene cause cortical dysplasia, complex, with other brain malformations 6. Alternative splicing results in multiple splice variants. There are multiple pseudogenes for this gene on chromosomes 1, 6, 7, 8, 9, and 13. [provided by RefSeq, Jun 2014]

Immunogen Information

Gene ID	Swiss Prot
203068	P07437

Immunogen

A synthesized peptide derived from human β -Tubulin

Synonyms

CDCBM6; CSCSC1; M40; OK/SW-cl.56; TUBB1; TUBB5

Product Information

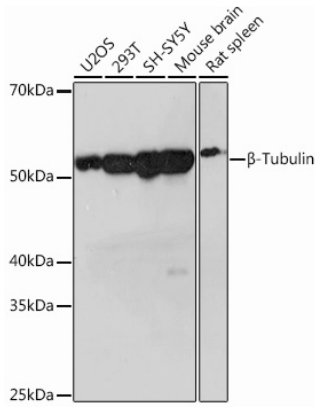
Source	Isotype	Purification
Rabbit	IgG	Affinity purification

Storage

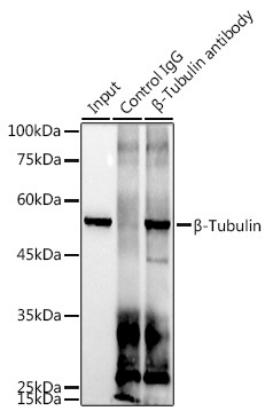
Store at -20°C. Avoid freeze / thaw cycles.

Buffer: PBS with 0.02% sodium azide, 0.05% BSA, 50% glycerol, pH7.3.

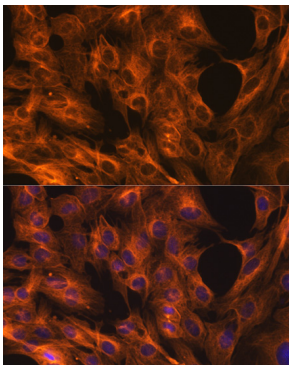
Validation Data



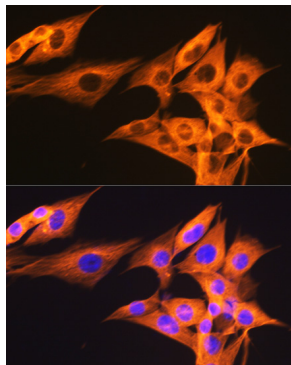
Western blot analysis of extracts of various cell lines, using β -Tubulin Rabbit mAb (A12289) at 1: 1000 dilution.
Secondary antibody: HRP Goat Anti-Rabbit IgG (H+L) (AS014) at 1:10000 dilution.
Lysates/proteins: 25ug per lane.
Blocking buffer: 3% nonfat dry milk in TBST.
Detection: ECL Basic Kit (RM00020).
Exposure time: 3s.



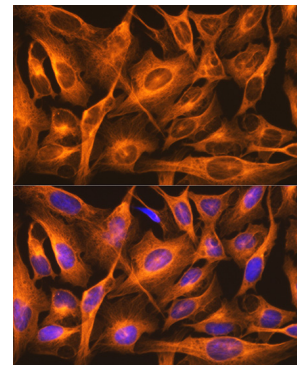
Immunoprecipitation analysis of 300ug extracts of 293T cells using 3ug β -Tubulin antibody (A12289). Western blot was performed from the immunoprecipitate using β -Tubulin antibody (A12289) at a dilution of 1:1000.



Immunofluorescence analysis of C6 cells using β -Tubulin antibody (A12289) at dilution of 1:100. Blue: DAPI for nuclear staining.



Immunofluorescence analysis of NIH/3T3 cells using β -Tubulin antibody (A12289) at dilution of 1:100. Blue: DAPI for nuclear staining.



Immunofluorescence analysis of U2OS cells using β -Tubulin antibody (A12289) at dilution of 1:100. Blue: DAPI for nuclear staining.