

A12045

Leader in Biomolecular Solutions for Life Science



Aggrecan Rabbit pAb

Catalog No.: A12045 **4 Publications**

Basic Information

Observed MW

230kDa

Calculated MW

261kDa

Category

Polyclonal Antibody

Applications

WB,IF/ICC,ELISA

Cross-Reactivity

Mouse,Rat

Background

This gene is a member of the aggrecan/versican proteoglycan family. The encoded protein is an integral part of the extracellular matrix in cartilagenous tissue and it withstands compression in cartilage. Mutations in this gene may be involved in skeletal dysplasia and spinal degeneration. Multiple alternatively spliced transcript variants that encode different protein isoforms have been observed in this gene.

Recommended Dilutions

WB	1:500 - 1:2000
IF/ICC	1:50 - 1:200

Immunogen Information

Gene ID	Swiss Prot
176	P16112

Immunogen

Recombinant fusion protein containing a sequence corresponding to amino acids 420-575 of human Aggrecan (NP_037359.3).

Synonyms

AGC1; SEDK; AGCAN; CSPG1; MSK16; CSPGCP; SSOAOD; Aggrecan

Contact



www.abclonal.com

Product Information

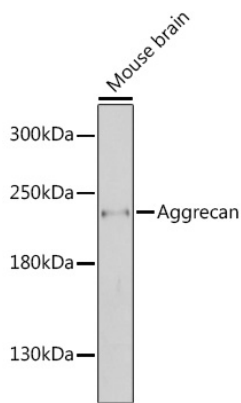
Source	Isotype	Purification
Rabbit	IgG	Affinity purification

Storage

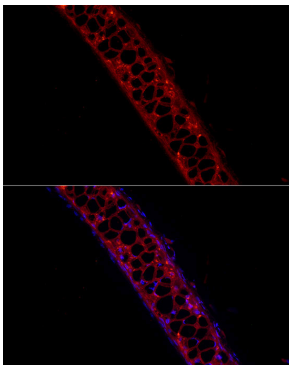
Store at -20°C. Avoid freeze / thaw cycles.

Buffer: PBS with 0.05% proclin300,50% glycerol,pH7.3.

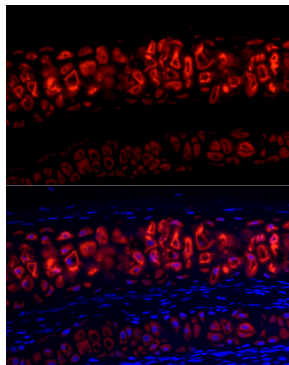
Validation Data



Western blot analysis of extracts of mouse brain, using Aggrecan antibody (A12045) at 1:1000 dilution. Secondary antibody: HRP Goat Anti-Rabbit IgG (H+L) (AS014) at 1:10000 dilution. Lysates/proteins: 25µg per lane. Blocking buffer: 3% nonfat dry milk in TBST. Detection: ECL Enhanced Kit (RM00021). Exposure time: 90s.



Immunofluorescence analysis of Mouse cartilage cells using Aggrecan Rabbit pAb (A12045) at dilution of 1:50 (40x lens). Blue: DAPI for nuclear staining.



Immunofluorescence analysis of Rat cartilage cells using Aggrecan antibody (A12045) at dilution of 1:100 (40x lens). Blue: DAPI for nuclear staining.