

A11881

Leader in Biomolecular Solutions for Life Science



EZH2/KMT6 Rabbit mAb

Catalog No.: A11881 **Recombinant**

Basic Information

Observed MW

90kDa

Calculated MW

85kDa

Category

SMab Recombinant Monoclonal Antibody

Applications

WB,IHC-P,IF/ICC,IP,ChIP,FC,ELISA

Cross-Reactivity

Human,Mouse,Rat,Monkey

Background

This gene encodes a member of the Polycomb-group (PcG) family. PcG family members form multimeric protein complexes, which are involved in maintaining the transcriptional repressive state of genes over successive cell generations. This protein associates with the embryonic ectoderm development protein, the VAV1 oncoprotein, and the X-linked nuclear protein. This protein may play a role in the hematopoietic and central nervous systems. Multiple alternatively spliced transcript variants encoding distinct isoforms have been identified for this gene.

Recommended Dilutions

WB	1:500 - 1:2000
IHC-P	1:50 - 1:100
IF/ICC	1:50 - 1:100
IP	1:20 - 1:50
FC	1:20 - 1:50
ChIP	1:20 - 1:100

Immunogen Information

Gene ID

2146

Swiss Prot

Q15910

Immunogen

Recombinant protein of human EZH2/KMT6

Synonyms

WVS; ENX1; KMT6; WVS2; ENX-1; EZH2b; KMT6A; EZH2/KMT6

Contact



www.abclonal.com

Product Information

Source

Rabbit

Isotype

IgG

Purification

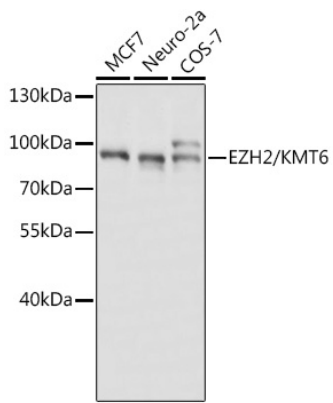
Affinity purification

Storage

Store at -20°C. Avoid freeze / thaw cycles.

Buffer: PBS with 0.02% sodium azide,50% glycerol,pH7.3.

Validation Data



Western blot analysis of various lysates using EZH2/KMT6 Rabbit mAb (A11881).
Secondary antibody: HRP Goat Anti-Rabbit IgG (H+L) (AS014) at 1:10000 dilution.
Lysates/proteins: 25µg per lane.
Blocking buffer: 3% nonfat dry milk in TBST.