

A11823

Leader in Biomolecular Solutions for Life Science

CNR1 Rabbit pAb

Catalog No.: A11823



Basic Information

Observed MW

53kDa

Calculated MW

53kDa

Category

Polyclonal Antibody

Applications

WB

Cross-Reactivity

Human

Background

This gene encodes one of two cannabinoid receptors. The cannabinoids, principally delta-9-tetrahydrocannabinol and synthetic analogs, are psychoactive ingredients of marijuana. The cannabinoid receptors are members of the guanine-nucleotide-binding protein (G-protein) coupled receptor family, which inhibit adenylate cyclase activity in a dose-dependent, stereoselective and pertussis toxin-sensitive manner. The two receptors have been found to be involved in the cannabinoid-induced CNS effects (including alterations in mood and cognition) experienced by users of marijuana. Multiple transcript variants encoding two different protein isoforms have been described for this gene.

Recommended Dilutions

WB 1:200 - 1:1000

Immunogen Information

Gene ID

1268

Swiss Prot

P21554

Immunogen

A synthetic peptide of human CNR1

Synonyms

CB1; CNR; CB-R; CB1A; CB1R; CANN6; CB1K5; CNR1

Contact



www.abclonal.com

Product Information

Source

Rabbit

Isotype

IgG

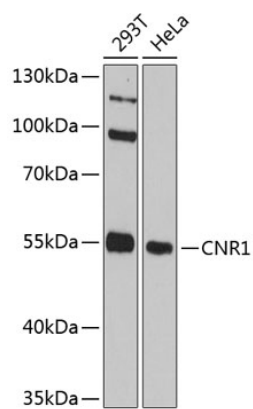
Purification

Affinity purification

Storage

Store at 4°C (regular) or -20°C (long term). Avoid freeze / thaw cycles.
Buffer: PBS with 0.02% sodium azide, pH7.3.

Validation Data



Western blot analysis of various lysates using CNR1 Rabbit pAb (A11823) at 1:1000 dilution.
Secondary antibody: HRP Goat Anti-Rabbit IgG (H+L) (AS014) at 1:10000 dilution.
Lysates/proteins: 25µg per lane.
Blocking buffer: 3% nonfat dry milk in TBST.
Detection: ECL Basic Kit (RM00020).
Exposure time: 90s.