

ASC / TMS1 Rabbit pAb

Catalog No.: A1170 **30 Publications**

Basic Information

Catalog No.

A1170

Observed MW

20kDa

Calculated MW

15kDa/19kDa/21kDa

Category

Primary antibody

Applications

WB, IF

Cross-Reactivity

Human, Mouse, Rat

Recommended Dilutions

WB	1:500 - 1:2000
IF	1:50 - 1:200

Contact

 | www.abclonal.com

Background

This gene encodes an adaptor protein that is composed of two protein-protein interaction domains: a N-terminal PYRIN-PAAD-DAPIN domain (PYD) and a C-terminal caspase-recruitment domain (CARD). The PYD and CARD domains are members of the six-helix bundle death domain-fold superfamily that mediates assembly of large signaling complexes in the inflammatory and apoptotic signaling pathways via the activation of caspase. In normal cells, this protein is localized to the cytoplasm; however, in cells undergoing apoptosis, it forms ball-like aggregates near the nuclear periphery. Two transcript variants encoding different isoforms have been found for this gene.

Immunogen Information

Gene ID	Swiss Prot
29108	Q9ULZ3

Immunogen

Recombinant fusion protein containing a sequence corresponding to amino acids 50-195 of human ASC / TMS1 (NP_037390.2).

Synonyms

PYCARD;ASC;CARD5;TMS;TMS-1;TMS1;PYD and CARD domain containing;ASC / TMS1

Product Information

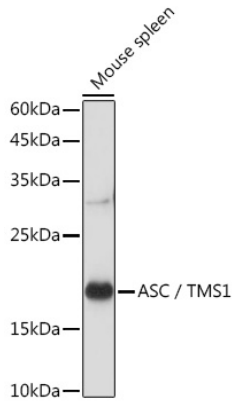
Source	Isotype	Purification
Rabbit	IgG	Affinity purification

Storage

Store at -20°C. Avoid freeze / thaw cycles.

Buffer: PBS with 0.02% sodium azide,50% glycerol,pH7.3.

Validation Data



Western blot analysis of extracts of Mouse spleen, using ASC / TMS1 antibody (A1170) at 1:1000 dilution.

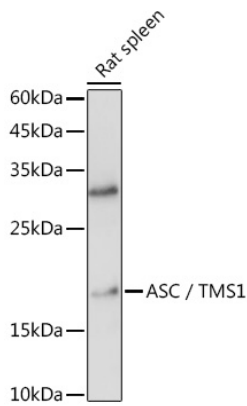
Secondary antibody: HRP Goat Anti-Rabbit IgG (H+L) (AS014) at 1:10000 dilution.

Lysates/proteins: 25ug per lane.

Blocking buffer: 3% nonfat dry milk in TBST.

Detection: ECL Basic Kit (RM00020).

Exposure time: 30s.



Western blot analysis of extracts of Rat spleen, using ASC / TMS1 antibody (A1170) at 1:1000 dilution.

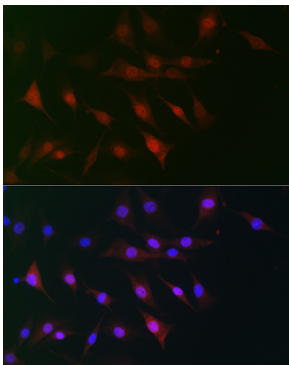
Secondary antibody: HRP Goat Anti-Rabbit IgG (H+L) (AS014) at 1:10000 dilution.

Lysates/proteins: 25ug per lane.

Blocking buffer: 3% nonfat dry milk in TBST.

Detection: ECL Basic Kit (RM00020).

Exposure time: 180s.



Immunofluorescence analysis of NIH-3T3 cells using ASC / TMS1 Rabbit pAb (A1170) at dilution of 1:100 (40x lens). Blue: DAPI for nuclear staining.