

# Na<sup>+</sup>/K<sup>+</sup>-ATPase Rabbit mAb

Catalog No.: A11683 **Recombinant**

## Basic Information

**Catalog No.**

A11683

**Observed MW**

113kDa

**Calculated MW**

100kDa

**Category**

Primary antibody

**Applications**

WB, IHC, IF

**Cross-Reactivity**

Human, Mouse, Rat

## Recommended Dilutions

<b>WB</b>	1:500 - 1:2000
<b>IHC</b>	1:50 - 1:200
<b>IF</b>	1:50 - 1:200

## Contact

 | [www.abclonal.com](http://www.abclonal.com)

## Background

The protein encoded by this gene belongs to the family of P-type cation transport ATPases, and to the subfamily of Na<sup>+</sup>/K<sup>+</sup>-ATPases. Na<sup>+</sup>/K<sup>+</sup>-ATPase is an integral membrane protein responsible for establishing and maintaining the electrochemical gradients of Na and K ions across the plasma membrane. These gradients are essential for osmoregulation, for sodium-coupled transport of a variety of organic and inorganic molecules, and for electrical excitability of nerve and muscle. This enzyme is composed of two subunits, a large catalytic subunit (alpha) and a smaller glycoprotein subunit (beta). The catalytic subunit of Na<sup>+</sup>/K<sup>+</sup>-ATPase is encoded by multiple genes. This gene encodes an alpha 1 subunit. Multiple transcript variants encoding different isoforms have been found for this gene. [provided by RefSeq, May 2009]

## Immunogen Information

<b>Gene ID</b>	<b>Swiss Prot</b>
476	P05023

**Immunogen**A synthesized peptide derived from human Na<sup>+</sup>/K<sup>+</sup>-ATPase**Synonyms**ATP1A1; ATPase Na<sup>+</sup>/K<sup>+</sup> transporting subunit alpha 1

## Product Information

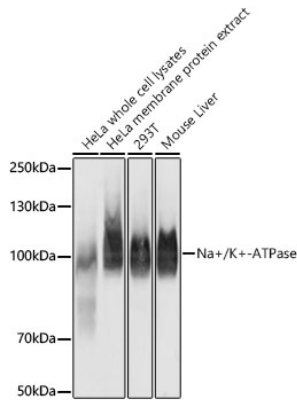
<b>Source</b>	<b>Isotype</b>	<b>Purification</b>
Rabbit	IgG	Affinity purification

**Storage**

Store at -20°C. Avoid freeze / thaw cycles.

Buffer: PBS with 0.02% sodium azide, 0.05% BSA, 50% glycerol, pH7.3.

## Validation Data



Western blot analysis of extracts of various cell lines, using Na<sup>+</sup>/K<sup>+</sup>-ATPase antibody (A11683) at 1:100000 dilution.

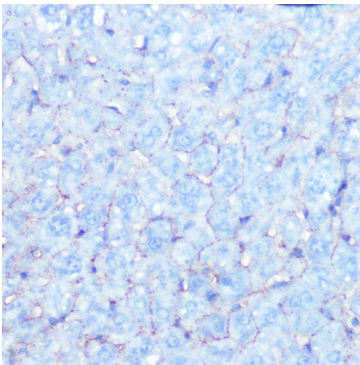
Secondary antibody: HRP Goat Anti-Rabbit IgG (H+L) (AS014) at 1:10000 dilution.

Lysates/proteins: 25ug per lane.

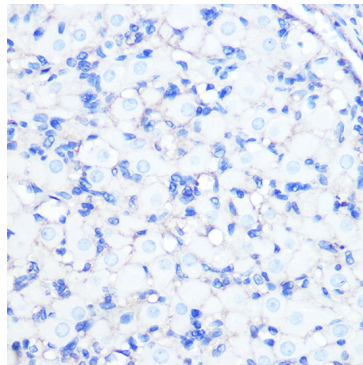
Blocking buffer: 3% nonfat dry milk in TBST.

Detection: ECL Basic Kit (RM00020).

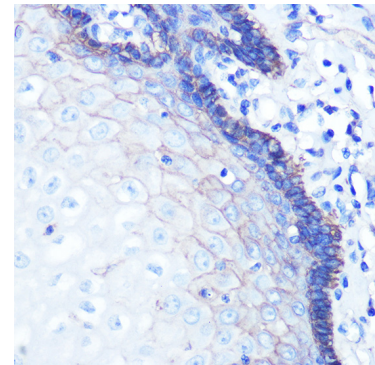
Exposure time: 10s.



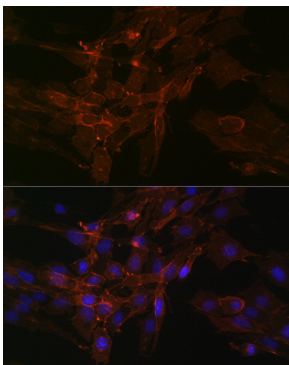
Immunohistochemistry of paraffin-embedded mouse liver using Na<sup>+</sup>/K<sup>+</sup>-ATPase Rabbit mAb (A11683) at dilution of 1:100 (40x lens).



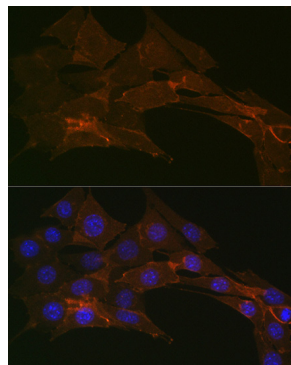
Immunohistochemistry of paraffin-embedded rat ovary using Na<sup>+</sup>/K<sup>+</sup>-ATPase Rabbit mAb (A11683) at dilution of 1:100 (40x lens).



Immunohistochemistry of paraffin-embedded human esophageal using Na<sup>+</sup>/K<sup>+</sup>-ATPase Rabbit mAb (A11683) at dilution of 1:100 (40x lens).



Immunofluorescence analysis of C6 cells using Na<sup>+</sup>/K<sup>+</sup>-ATPase Rabbit mAb (A11683) at dilution of 1:100 (40x lens). Blue: DAPI for nuclear staining.



Immunofluorescence analysis of NIH-3T3 cells using Na<sup>+</sup>/K<sup>+</sup>-ATPase Rabbit mAb (A11683) at dilution of 1:100 (40x lens). Blue: DAPI for nuclear staining.