

[KO Validated] KDM1 Rabbit pAb

Catalog No.: A1156 **KO** **Validated** **3 Publications**

Basic Information

Catalog No.

A1156

Observed MW

117kDa

Calculated MW

92kDa/95kDa

Category

Primary antibody

Applications

WB, IF, IP

Cross-Reactivity

Human, Mouse, Rat

Background

This gene encodes a nuclear protein containing a SWIRM domain, a FAD-binding motif, and an amine oxidase domain. This protein is a component of several histone deacetylase complexes, though it silences genes by functioning as a histone demethylase. Alternative splicing results in multiple transcript variants.

Recommended Dilutions

WB	1:500 - 1:2000
IF	1:50 - 1:100
IP	1:50 - 1:100

Immunogen Information

Gene ID	Swiss Prot
23028	O60341

Immunogen

Recombinant fusion protein containing a sequence corresponding to amino acids 130-380 of human KDM1 (NP_055828.2).

Synonyms

KDM1A;AOF2;BHC110;CPRF;KDM1;LSD1;KDM1

Contact

 | www.abclonal.com

Product Information

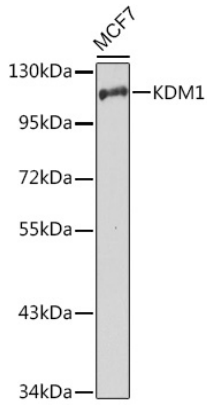
Source	Isotype	Purification
Rabbit	IgG	Affinity purification

Storage

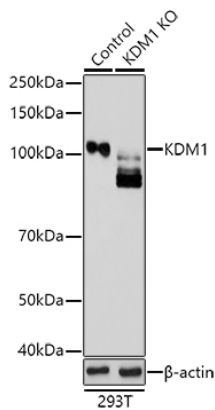
Store at -20°C. Avoid freeze / thaw cycles.

Buffer: PBS with 0.02% sodium azide, 50% glycerol, pH7.3.

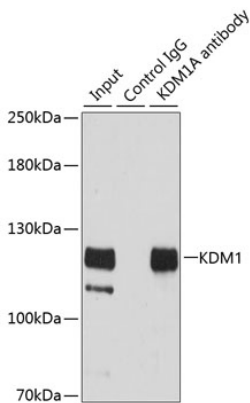
Validation Data



Western blot analysis of extracts of MCF7 cells, using KDM1 antibody (A1156) at 1:1000 dilution.
Secondary antibody: HRP Goat Anti-Rabbit IgG (H+L) (AS014) at 1:10000 dilution.
Lysates/proteins: 25ug per lane.
Blocking buffer: 3% nonfat dry milk in TBST.
Detection: ECL Basic Kit (RM00020).

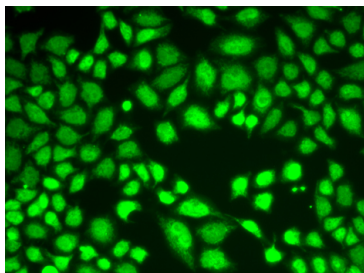


Western blot analysis of extracts from normal (control) and KDM1 knockout (KO) 293T cells, using KDM1 antibody (A1156) at 1:1000 dilution.
Secondary antibody: HRP Goat Anti-Rabbit IgG (H+L) (AS014) at 1:10000 dilution.
Lysates/proteins: 25ug per lane.
Blocking buffer: 3% nonfat dry milk in TBST.
Detection: ECL Basic Kit (RM00020).
Exposure time: 30s.



Immunoprecipitation analysis of 200ug extracts of HeLa cells using 3ug KDM1 antibody (A1156).
Western blot was performed from the immunoprecipitate using KDM1 antibody (A1156) at a dilution of 1:500.

Validation Data



Immunofluorescence analysis of A549 cells using KDM1 antibody (A1156).