

A1133

Leader in Biomolecular Solutions for Life Science



# CTCF Rabbit pAb

Catalog No.: A1133 **8 Publications**

## Basic Information

### Observed MW

140kDa

### Calculated MW

83kDa

### Category

Polyclonal Antibody

### Applications

WB,IF/ICC,IP,ChIP,ELISA

### Cross-Reactivity

Human,Mouse,Rat

## Background

This gene is a member of the BORIS + CTCF gene family and encodes a transcriptional regulator protein with 11 highly conserved zinc finger (ZF) domains. This nuclear protein is able to use different combinations of the ZF domains to bind different DNA target sequences and proteins. Depending upon the context of the site, the protein can bind a histone acetyltransferase (HAT)-containing complex and function as a transcriptional activator or bind a histone deacetylase (HDAC)-containing complex and function as a transcriptional repressor. If the protein is bound to a transcriptional insulator element, it can block communication between enhancers and upstream promoters, thereby regulating imprinted expression. Mutations in this gene have been associated with invasive breast cancers, prostate cancers, and Wilms' tumors. Alternatively spliced transcript variants encoding different isoforms have been found for this gene.

## Recommended Dilutions

**WB** 1:500 - 1:1000

**IF/ICC** 1:50 - 1:200

**IP** 0.5µg-4µg antibody for  
200µg-400µg extracts of  
whole cells

**ChIP** 5µg antibody for  
10µg-15µg of Chromatin

## Immunogen Information

### Gene ID

10664

### Swiss Prot

P49711

### Immunogen

Recombinant fusion protein containing a sequence corresponding to amino acids 1-260 of human CTCF (NP\_006556.1).

### Synonyms

MRD21; FAP108; CFAP108; CTCF

## Contact



[www.abclonal.com](http://www.abclonal.com)

## Product Information

### Source

Rabbit

### Isotype

IgG

### Purification

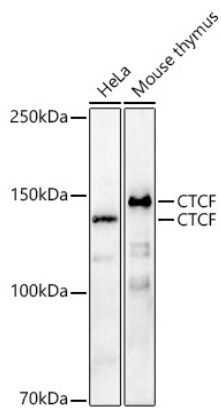
Affinity purification

### Storage

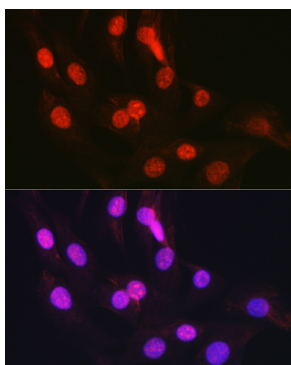
Store at -20°C. Avoid freeze / thaw cycles.

Buffer: PBS with 0.05% proclin300,50% glycerol,pH7.3.

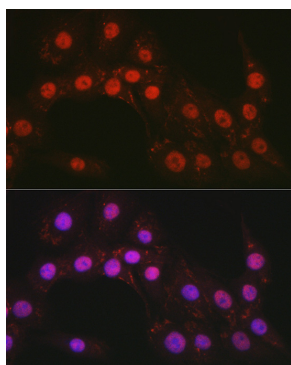
## Validation Data



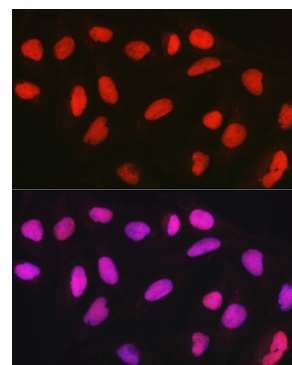
Western blot analysis of various lysates, using CTCF Rabbit pAb (A1133) at 1:1000 dilution.  
 Secondary antibody: HRP Goat Anti-Rabbit IgG (H+L) (AS014) at 1:10000 dilution.  
 Lysates/proteins: 25ug per lane.  
 Blocking buffer: 3% nonfat dry milk in TBST.  
 Detection: ECL Basic Kit (RM00020).  
 Exposure time: 180s.



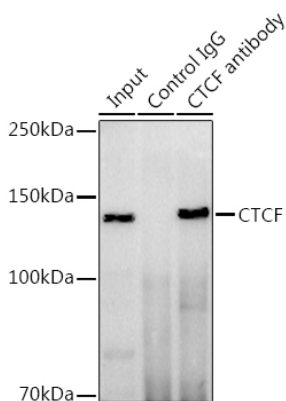
Immunofluorescence analysis of NIH/3T3 cells using CTCF Rabbit pAb (A1133) at dilution of 1:50 (40x lens). Secondary antibody: Cy3 Goat Anti-Rabbit IgG (H+L) (AS007) at 1:500 dilution. Blue: DAPI for nuclear staining.



Immunofluorescence analysis of PC-12 cells using CTCF Rabbit pAb (A1133) at dilution of 1:50 (40x lens). Secondary antibody: Cy3 Goat Anti-Rabbit IgG (H+L) (AS007) at 1:500 dilution. Blue: DAPI for nuclear staining.



Immunofluorescence analysis of U2OS cells using CTCF Rabbit pAb (A1133) at dilution of 1:50 (40x lens). Secondary antibody: Cy3 Goat Anti-Rabbit IgG (H+L) (AS007) at 1:500 dilution. Blue: DAPI for nuclear staining.



Immunoprecipitation analysis of 300 µg extracts of HeLa cells using 3 µg CTCF antibody (A1133). Western blot was performed from the immunoprecipitate using CTCF antibody (A1133) at a dilution of 1:500.

Chromatin Immunoprecipitation analysis of extracts of HeLa cells, using CTCF antibody (A1133) and rabbit IgG. The amount of immunoprecipitated DNA was checked by quantitative PCR. Histogram was constructed by the ratios of the immunoprecipitated DNA to the input.