

A11235

Leader in Biomolecular Solutions for Life Science



Annexin A2 Rabbit mAb

Catalog No.: A11235 **Recombinant** **3 Publications**

Basic Information

Observed MW

39kDa

Calculated MW

39kDa

Category

SMab Recombinant Monoclonal Antibody

Applications

WB,IHC-P,ELISA

Cross-Reactivity

Human,Mouse,Rat

CloneNo number

ARC0554

Background

This gene encodes a member of the annexin family. Members of this calcium-dependent phospholipid-binding protein family play a role in the regulation of cellular growth and in signal transduction pathways. This protein functions as an autocrine factor which heightens osteoclast formation and bone resorption. This gene has three pseudogenes located on chromosomes 4, 9 and 10, respectively. Multiple alternatively spliced transcript variants encoding different isoforms have been found for this gene. Annexin A2 expression has been found to correlate with resistance to treatment against various cancer forms.

Recommended Dilutions

WB	1:500 - 1:2000
IHC-P	1:500 - 1:1000

Immunogen Information

Gene ID

302

Swiss Prot

P07355

Immunogen

A synthetic peptide corresponding to a sequence within amino acids 1-100 of human Annexin A2 (P07355).

Synonyms

P36; ANX2; LIP2; LPC2; CAL1H; LPC2D; ANX2L4; PAP-IV; HEL-S-270; Annexin A2

Contact



www.abclonal.com

Product Information

Source

Rabbit

Isotype

IgG

Purification

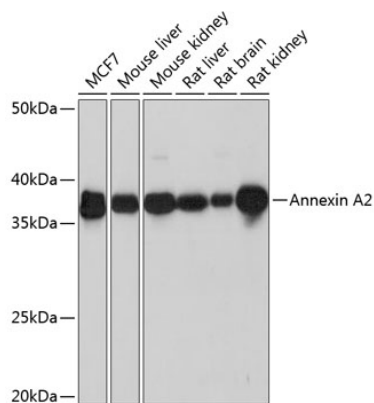
Affinity purification

Storage

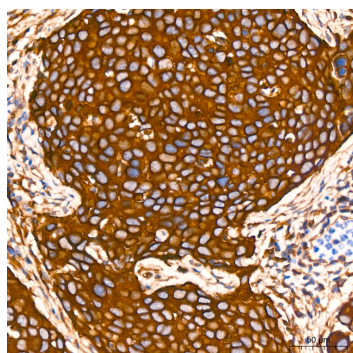
Store at -20°C. Avoid freeze / thaw cycles.

Buffer: PBS with 0.02% sodium azide,0.05% BSA,50% glycerol,pH7.3.

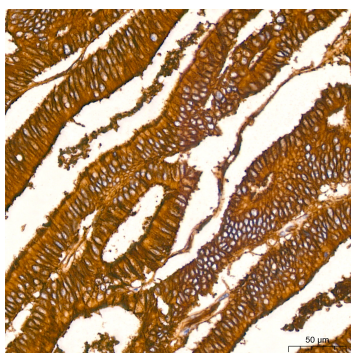
Validation Data



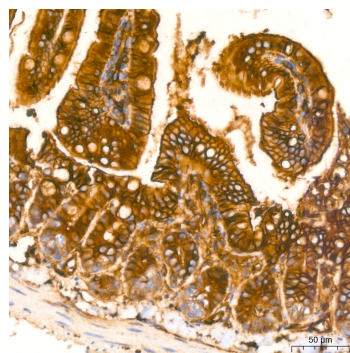
Western blot analysis of extracts of various cell lines, using Annexin A2 Rabbit mAb (A11235) at 1:1000 dilution.
 Secondary antibody: HRP Goat Anti-Rabbit IgG (H+L) (AS014) at 1:10000 dilution.
 Lysates/proteins: 25µg per lane.
 Blocking buffer: 3% nonfat dry milk in TBST.
 Detection: ECL Basic Kit (RM00020).
 Exposure time: 10s.



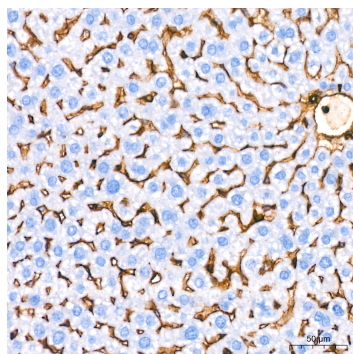
Immunohistochemistry analysis of Annexin A2 in paraffin-embedded human cervix cancer tissue using Annexin A2 Rabbit mAb (A11235) at a dilution of 1:800 (40x lens). High pressure antigen retrieval was performed with 0.01 M citrate buffer (pH 6.0) prior to IHC staining.



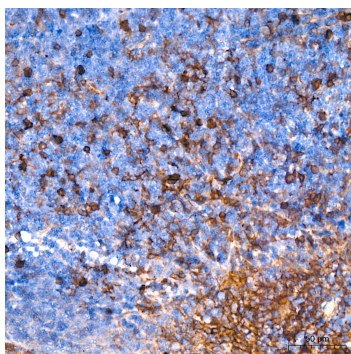
Immunohistochemistry analysis of Annexin A2 in paraffin-embedded human colon carcinoma tissue using Annexin A2 Rabbit mAb (A11235) at a dilution of 1:800 (40x lens). High pressure antigen retrieval was performed with 0.01 M citrate buffer (pH 6.0) prior to IHC staining.



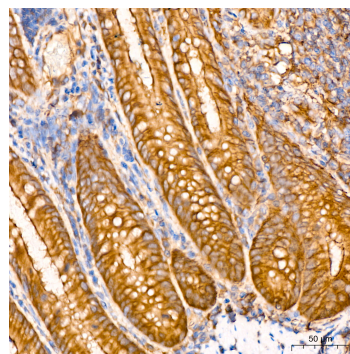
Immunohistochemistry analysis of Annexin A2 in paraffin-embedded mouse colon tissue using Annexin A2 Rabbit mAb (A11235) at a dilution of 1:800 (40x lens). High pressure antigen retrieval was performed with 0.01 M citrate buffer (pH 6.0) prior to IHC staining.



Immunohistochemistry analysis of Annexin A2 in paraffin-embedded mouse liver tissue using Annexin A2 Rabbit mAb (A11235) at a dilution of 1:800 (40x lens). High pressure antigen retrieval was performed with 0.01 M citrate buffer (pH 6.0) prior to IHC staining.



Immunohistochemistry analysis of Annexin A2 in paraffin-embedded mouse spleen tissue using Annexin A2 Rabbit mAb (A11235) at a dilution of 1:800 (40x lens). High pressure antigen retrieval was performed with 0.01 M citrate buffer (pH 6.0) prior to IHC staining.



Immunohistochemistry analysis of Annexin A2 in paraffin-embedded rat colon tissue using Annexin A2 Rabbit mAb (A11235) at a dilution of 1:800 (40x lens). High pressure antigen retrieval was performed with 0.01 M citrate buffer (pH 6.0) prior to IHC staining.