

A11157

Leader in Biomolecular Solutions for Life Science



CD3H Rabbit mAb

Catalog No.: A11157 **Recombinant** **1 Publications**

Basic Information

Observed MW

16kDa

Calculated MW

19kDa

Category

SMab Recombinant Monoclonal Antibody

Applications

WB,IHC-P,ELISA,FC (intra)

Cross-Reactivity

Human

CloneNo number

ARC0533

Background

The protein encoded by this gene is T-cell receptor zeta, which together with T-cell receptor alpha/beta and gamma/delta heterodimers, and with CD3-gamma, -delta and -epsilon, forms the T-cell receptor-CD3 complex. The zeta chain plays an important role in coupling antigen recognition to several intracellular signal-transduction pathways. Low expression of the antigen results in impaired immune response. Two alternatively spliced transcript variants encoding distinct isoforms have been found for this gene.

Recommended Dilutions

WB	1:500 - 1:2000
IHC-P	1:50 - 1:200
FC (intra)	1:50 - 1:200

Immunogen Information

Gene ID

919

Swiss Prot

P20963

Immunogen

A synthetic peptide corresponding to a sequence within amino acids 65-164 of human CD3H (P20963).

Synonyms

T3Z; CD3H; CD3Q; CD3Z; TCRZ; IMD25; CD3ZETA; CD3-ZETA

Contact



www.abclonal.com

Product Information

Source

Rabbit

Isotype

IgG

Purification

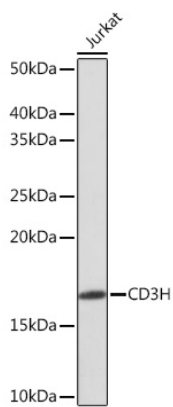
Affinity purification

Storage

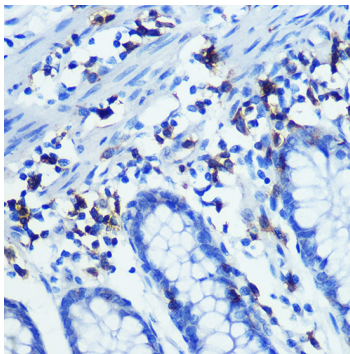
Store at -20°C. Avoid freeze / thaw cycles.

Buffer: PBS with 0.02% sodium azide,0.05% BSA,50% glycerol,pH7.3.

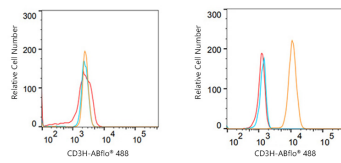
Validation Data



Western blot analysis of lysates from Jurkat cells, using CD3H Rabbit mAb (A11157) at 1:1000 dilution.
Secondary antibody: HRP Goat Anti-Rabbit IgG (H+L) (AS014) at 1:10000 dilution.
Lysates/proteins: 25µg per lane.
Blocking buffer: 3% nonfat dry milk in TBST.
Detection: ECL Enhanced Kit (RM00021).
Exposure time: 3min.



Immunohistochemistry analysis of CD3H in paraffin-embedded human colon using CD3H Rabbit mAb (A11157) at dilution of 1:100 (40x lens). Perform microwave antigen retrieval with 10 mM PBS buffer pH 7.2 before commencing with IHC staining protocol.



Flow cytometry: 1×10^6 Raji cells (negative control, left) and Jurkat cells (right) were intracellularly-stained with CD3H Rabbit mAb (A11157, 10 µg/mL, orange line) or Rabbit IgG isotype control (AC042, 10 µg/mL, blue line), followed by FITC conjugated goat anti-rabbit pAb (1:200 dilution) staining. Non-fluorescently stained cells were used as blank control (red line).