

A11153

Leader in Biomolecular Solutions for Life Science



## MRP1/ABCC1 Rabbit pAb

Catalog No.: A11153

3 Publications

### Basic Information

#### Observed MW

210kDa

#### Calculated MW

172kDa

#### Category

Polyclonal Antibody

#### Applications

WB,ELISA

#### Cross-Reactivity

Human

### Background

The protein encoded by this gene is a member of the superfamily of ATP-binding cassette (ABC) transporters. ABC proteins transport various molecules across extra-and intra-cellular membranes. ABC genes are divided into seven distinct subfamilies (ABC1, MDR/TAP, MRP, ALD, OABP, GCN20, White). This full transporter is a member of the MRP subfamily which is involved in multi-drug resistance. This protein functions as a multispecific organic anion transporter, with oxidized glutathione, cysteinyl leukotrienes, and activated aflatoxin B1 as substrates. This protein also transports glucuronides and sulfate conjugates of steroid hormones and bile salts. Alternatively spliced variants of this gene have been described but their full-length nature is unknown.

### Recommended Dilutions

WB 1:500 - 1:2000

### Immunogen Information

#### Gene ID

4363

#### Swiss Prot

P33527

#### Immunogen

Recombinant fusion protein containing a sequence corresponding to amino acids 850-960 of human MRP1/ABCC1 (NP\_004987.2).

#### Synonyms

MRP; ABCC; GS-X; MRP1; ABC29; DFNA77; MRP1/ABCC1

### Contact



[www.abclonal.com](http://www.abclonal.com)

### Product Information

#### Source

Rabbit

#### Isotype

IgG

#### Purification

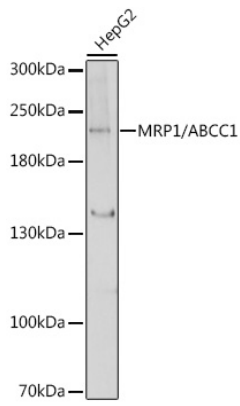
Affinity purification

#### Storage

Store at -20°C. Avoid freeze / thaw cycles.

Buffer: PBS with 0.02% sodium azide,50% glycerol,pH7.3.

## Validation Data



Western blot analysis of extracts of HepG2 cells, using MRP1/ABCC1 antibody (A11153) at 1:1000 dilution.  
Secondary antibody: HRP Goat Anti-Rabbit IgG (H+L) (AS014) at 1:10000 dilution.  
Lysates/proteins: 25µg per lane.  
Blocking buffer: 3% nonfat dry milk in TBST.  
Detection: ECL Basic Kit (RM00020).  
Exposure time: 5s.

Western blot analysis of extracts of HeLa cells, using MRP1/ABCC1 antibody (A11153) at 1:1000 dilution.  
Secondary antibody: HRP Goat Anti-Rabbit IgG (H+L) (AS014) at 1:10000 dilution.  
Lysates/proteins: 25µg per lane.  
Blocking buffer: 3% nonfat dry milk in TBST.  
Detection: ECL Basic Kit (RM00020).  
Exposure time: 10s.

