

A11132

Leader in Biomolecular Solutions for Life Science



# ALDH1A1 Rabbit mAb

Catalog No.: A11132 **Recombinant**

## Basic Information

### Observed MW

55kDa

### Calculated MW

55kDa

### Category

SMab Recombinant Monoclonal Antibody

### Applications

WB,IHC-P,IF/ICC,IP,ELISA

### Cross-Reactivity

Human,Mouse,Rat

## Background

The protein encoded by this gene belongs to the aldehyde dehydrogenase family. Aldehyde dehydrogenase is the next enzyme after alcohol dehydrogenase in the major pathway of alcohol metabolism. There are two major aldehyde dehydrogenase isozymes in the liver, cytosolic and mitochondrial, which are encoded by distinct genes, and can be distinguished by their electrophoretic mobility, kinetic properties, and subcellular localization. This gene encodes the cytosolic isozyme. Studies in mice show that through its role in retinol metabolism, this gene may also be involved in the regulation of the metabolic responses to high-fat diet.

## Recommended Dilutions

WB	1:500 - 1:2000
IHC-P	1:50 - 1:200
IF/ICC	1:50 - 1:200
IP	1:20 - 1:50

## Immunogen Information

<b>Gene ID</b>	<b>Swiss Prot</b>
216	P00352

### Immunogen

Recombinant protein of human ALDH1A1

### Synonyms

ALDC; ALDH1; HEL-9; HEL12; PUMB1; ALDH11; RALDH1; ALDH-E1; HEL-S-53e; ALDH1A1

## Contact



[www.abclonal.com](http://www.abclonal.com)

## Product Information

<b>Source</b>	<b>Isotype</b>	<b>Purification</b>
Rabbit	IgG	Affinity purification

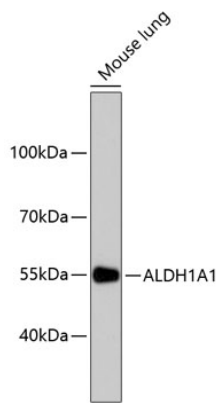
### Storage

Store at -20°C. Avoid freeze / thaw cycles.

Buffer: PBS with 0.02% sodium azide,0.05% BSA,50% glycerol,pH7.3.

## Validation Data

---



Western blot analysis of extracts of mouse lung, using ALDH1A1 antibody (A11132).  
Secondary antibody: HRP Goat Anti-Rabbit IgG (H+L) (AS014) at 1:10000 dilution.  
Lysates/proteins: 25 $\mu$ g per lane.  
Blocking buffer: 3% nonfat dry milk in TBST.